



**Orissa Forestry Sector
Development Project**

**Annual
Activity Report**
2008-09



Efforts.... for prosperous Future





Annual Activity Report

2008-09

Orissa Forestry Sector Development Project
Forest & Environment Department
Government of Orissa

Published by:

Orissa Forestry Sector Development Society

SFTRI Campus, At/Po-Ghatikia, Bhubaneswar - 751 003

E-mail : webmail@ofsdp.org

<http://www.ofsdp.org>

Printed at : Jyoti Graphics, 0674-2544209



CONTENTS

PD's Desk	1
Project Outline... ..	2
Activities up to 2007-08	3
Highlights of 3rd year (2008-09 activities)	6
Activities 2008-09 in detail.... ..	11
Institutional Activities - Executive Level [PMU, DMU, FMU]	12
Strengthening of Executing Body	12
Executive Meetings	12
Capacity Building	13
Survey & Mapping -	20
Research	21
Convergence with other programmes -	22
Institutional Activities - VSS Level	23
VSS Establishment	23
VSS - Capacity Building	24
Exposure Visits	25
Micro-Planning	25
Forestry Interventions-	
JFM (RDF - ANR / SMC / Block Plantation)	26
'Fine Tuning ANR to augment livelihoods	28
Soil and Moisture Conservation Measures:	29
Fire protection:	29
Coastal Plantation (Mangrove / Casurina)-	30
Biodiversity Management	33
Nursery Establishment	35
Farm Forestry	36
Vermi-Compost	37
Non-JFM (Teak Plantation / Nursery, Forest roads & boundry for JFM sites)	
Artificial Regeneration (Teak)	38
Establishment of Hi-Tech Nurseries	39
Forest-type Improvement	40
Consolidation and Demarcation of Forest Boundaries	40
Forest Roads	40
Livelihood Interventions -	
Livelihood Promotion	41
Income Generation Activities	44
Monitoring & Evaluation	45
IEC during the year.... ..	48
Way forward ... Planning for 2009-10	50
Statement of Accounts	53



Annual Activity Report 2008-09
Orissa Forestry Sector Development Project



Abbreviations

ANR	Assisted Natural Regeneration	LVFW	Lady Village Forest Worker
APC	Agriculture Production Commissioner	M&E	Monitoring & Evaluation
BPL	Below Poverty Line	MIS	Management Information System
CF	Conservator of Forests	MoEF	Ministry of Environment and Forest
CCF	Chief Conservator of Forests	MoU	Memorandum of Understanding
CDM	Clean Development Mechanism	NGO	Non-Government Organization
CWLW	Chief Wild Life Warden	NRM	Natural Resource Management
DAC	District Advisory Committee	NTFP	Non-Timber Forest Product
DEO	Data Entry Operator	OFD	Orissa Forest Department
DFO	Divisional Forest Officer	OFDC	Orissa Forest Development Corporation
DGPS	Differential Global Positioning System	OFS	Orissa Forest Service
DMU	Divisional Management Unit	OFSDP	Orissa Forestry Sector Development Project
DPD	Deputy Project Director	OFSDS	Orissa Forestry Sector Development Society
EDCs	Eco Development Committees	OMFED	Orissa Milk Federation
EPA	Entry Point Activity	OREDA	Orissa Renewable Energy Development Agency
F&E Dept	Forest and Environment Department	ORMAS	Orissa Rural Marketing Society
FD	Forest Department	ORSAC	Orissa Remote Sensing Application Centre
FDA	Forest Development Agency	OTELP	Orissa Tribal Empowerment and Livelihood Programme
FEO	Forest Extension Officer	OUAT	Orissa University of Agriculture and Technology
FMU	Field Management Unit	P&C Dept.	Planning & Co-ordination Department
FRO	Forest Range Officer	PASPU	Policy Analysis and Strategic Planning Unit
FSI	Forest Survey of India	PCCF	Principal Chief Conservator of Forests
FY	Financial Year	PD	Project Director
GB	Governing Body	PMU	Project Management Unit
GC	General Consultant	PRA	Participatory Rural Appraisal
GIS	Geographical Information System	RDC	Revenue Divisional Commissioner
GoI	Government of India	RRA	Rapid Rural Appraisal
GoO	Government of Orissa	RTI Act	Right to Information Act, 2005
GPS	Global Positioning System	SFTRI	State Forest Training and Research Institute
HPC	High Power Committee	SHG	Self Help Group
HRD	Human Resource Development	ST/SC	Scheduled Tribes and Scheduled Castes
IAS	Indian Administrative Service	TNA	Training Need Analysis
ICFRE	Indian Council of Forestry Research and Education	ToR	Terms of Reference
IEC	Information, Education and Communication	ToT	Training of Trainers
IFS	Indian Forest Service	VDF	Village Forest Development Fund
IGA	Income Generation Activity	VFW	Village Forest Worker
IIFM	Indian Institute of Forest Management	VHF	Very High Frequency
JBIC	Japan Bank for International Cooperation	VSS	Vana Samarakshan Samiti
JFM	Joint Forest Management	WL Divn	Wildlife Division
JICA	Japan International Cooperation Agency	WORLP	Western Orissa Rural Livelihood Project
JPD	Joint Project Director	XIM	Xavier Institute of Management
LAN	Local Area Network		



PD's Desk

After establishing the logistics in the 1st year and completion of micro-planning in the 1st batch in the 2nd year, project activities on forestry and livelihood promotion continued in the 1st batch areas. Simultaneously micro-planning in 2nd batch JFM sites was completed and interventions started. Preparation for 3rd batch interventions were also started in this year.

1st batch interventions provided an opportunity for fine-tuning the processes and systems for planning and execution of activities in 2nd & 3rd batches.

Establishment of a robust, empowered and vibrant VSS structure, and developing them into village resource centre is the strategy adopted by the project aiming at institutionalizing JFM and ensuring sustainability..

Efforts are being made at every level for augmenting support through convergence of development programmes implemented by line-departments and resource agencies. Clear directives have been given by the Government to the concerned

departments for convergence support to project villages. In this direction project also conducted DMU level cross-learning workshops for understanding the convergence potential in each DMU and hence forth defining a robust strategy for fruitful convergence. Many departments have started extending their support in the project areas, with facilitative support and pro-active action by the project implementers.

Project also started activities in the Coastal Plantation and Bio-diversity component with the organization of community in Eco-Development Committees (EDCs), made possible with the enabling provisions in the Orissa JFM Resolution notified in October, 2008.

Multi-level Capacity Building programmes were conducted for different stakeholders on various aspects of the project. Exposure visits for project officials and the community leaders for getting practical experience are being regularly organised. These have helped in improving their understanding and confidence level.

Besides the internal capacity building programmes project officials also participated in different State-National training programmes. With the changing paradigm, it is most urgent to sensitize the project stakeholders on different aspect of development and innovative approaches being adopted in other developmental interventions.

Project organised the first National Cross-Learning workshop in Feb,09 at which delegates from all the JICA assisted forestry projects from all over the country, officials from many other states, and JICA experts deliberated on different livelihood promotion approaches in different states.

I expect the motivated community and stakeholders to maintain the zeal for working together for a robust development scenario.

(Arun K. Bansal)



Project Outline...

Overall goal of the project is restoration of degraded forests and improvement of the livelihood of villagers. For this purpose project strategy is involving the resident forest communities for sustainable forest management & simultaneous upgradation of livelihoods of the villagers. Major interventions are in JFM mode for improving environment and alleviating poverty.

With the total estimated cost of Rs. 660 Crores, the Project is being implemented in 14 forest and wildlife divisions viz. Angul, Balliguda, Bonai, Deogarh, Paralakhemundi, Jeypore, Phulbani, Keonjhar, Koraput, Raygada, Rourkela, Balasore-WL, Bhadrak-WL, and Satkosia-WL.

The main components of the Project are Restoration of Degraded Forests, Biodiversity Management, Community and Tribal development and Coastal plantations (Balasore and Bhadrak Districts).

The project approach is to have village specific local need based interventions in the JFM mode through the village committees. All the interventions in a project village are taken up together in a year after which the assets created are to be maintained. Emphasis in all interventions is on technology up gradation and development of sustainable livelihoods for the poorest of poor.

Government have constituted the Orissa Forestry Sector Development Society, as an Autonomous Organization under the Department of Forest and Environment, to facilitate smooth implementation of the Project.

The Project Executing Body comprises High Power Committee with Chief Secretary as Chair Person, Governing Body with Agriculture Production Commissioner as Chair Person, Project Management Unit at State level, Division Management Unit at Division level and Field Management Unit at Range level. The works in the field are facilitated by the existing organization of the Orissa Forest Department.

Main Items	Details
1. Restoration of Degraded Forests (Forest Management under JFM & Non-JFM Mode & Farm Forestry)	196,650 ha in 11 divisions 1) ANR 138,000 ha. 2) Block Plantation 39,650 ha. 3) Artificial Regeneration 19,000 ha.
2. Coastal Plantation	2,810 ha in 2 divisions
3. Biodiversity Management	Eco-tourism Development : 5 sites, Community Reserves/ Heritage Sites: 5 sites
4. Community/Tribal Development including Capacity Building of VSSs	Entry Point Activities, Income Generation Activities Livelihood Improvement, 2,275 VSSs, and 4,550 SHGs
5. Supporting Activities	Preparatory works, Strengthening of Executing Body, Infrastructure Development, Forest Research, Publicity and Communication, Monitoring and Evaluation, Phase-out/Phase-in Activities
6. Consulting Service	International: 42 Man Months Local: 181 Man Months



Activities up to 2007-08

2006-07

The Project implementation started in June 2006. The First year of the project (2006-07) was preparatory year in which the main task was the establishment of the Executing Body - High Power Committee, Governing Body, Project Management Unit (PMU), Divisional Management Units (DMU), Field Management Units (FMU), District Advisory Committees; along with strengthening, in terms of additional

infrastructure - extension buildings with furniture - computers and other equipments - vehicles for PMU, DMUs and FMUs, additional manpower through redeployment of Forest Extension Officers (FEOs) and Village Forest Workers (VFWs) etc.

Other important activities undertaken during the year included Training Need Analysis through XIMB, Selection of 1st

batch JFM sites (640) and award of contracts to specialized firms for survey and mapping of 1st batch JFM sites, initiation for selection of NGOs, sensitization programmes at various levels, Training of Trainers for first batch of Range Officers (FMU Chiefs) and FEOs, training workshops for production of quality planting materials, preparation of Accounting Procedure for OFSDS.

2007-08

The main activities undertaken during the year 2007-08, which was practically the first year of implementation were:

Institutional Strengthening -

- Finalization of VSS Management Manual
- Employment of General Consultants & Field Experts
- Selection of NGOs
- Infrastructure Development

at PMU, DMU & FMU Level with computerization & connectivity for robust communication.

- Construction of VSS Office-cum-Meeting hall in 1st batch areas strated.
- Formation of VSS working group and confirmation of VSS membership for adequate participation of the vulnerable groups as per the

project guidelines specified in VSS Management Manual.

- VSS organisation process for 1st batch completed and 2nd batch VSS organisation process started.
- Transfer of funds in VSS accounts by the project.
- Animators were employed in each VSS of the 1st batch for assisting in VSS works. They serve as a link between



VSS & the project and simultaneously liaising with different stakeholders.

- Meetings & workshops at different level for exploring convergence potential with line-departments & resource agencies.

Capacity Building -

- ToTs started in 2006-07 were completed.
- Training for micro-planning to engaged NGO Team leaders & grassroot forest personnels, member-secretaries & VSS office bearers (1st batch)
- Capacity building programmes for all categories of stakeholders were organised on different aspects of project interventions & financial management.

- OFSDP officials attended different meetings & workshops on innovative forestry approaches, community participation & role of civil society in forestry sector governance.

- Exposure-visits to WORLP areas were organised for understanding the grassroot planning for the VSS representatives.
- PMU organised Interactive programmes through GRAMSAT for direct interaction with grassroot stakeholders.

Survey & Mapping -

- Survey & mapping for 1st batch interventions completed & digitized maps provided to DMUs for micro-planning purpose.
- Selection of 2nd batch

degraded forest areas for JFM intervention were finalized.

- Survey & mapping process for 2nd batch JFM sites were started.

Micro-Planning & Implementation -

- Micro-planning in 623 sites/ VSS of 1st batch areas completed with facilitation support by field personnels & NGOs.
- Starting of Forestry & Livelihood interventions on the basis of prepared micro-plans in the 1st batch. In 13 sites work could be taken up due to local conflicts.
- Forestry specific interventions- ANR, SMC works, Block plantation works started in 610 sites with gross area of 64,206 ha. averaging about 105 ha. per site/VSS.



- During 2007-08, 465 VSS nurseries were established including 107 decentralized nurseries (where planting stock was produced for 2 or more VSSs).
- Various Livelihood improvement works were carried out from EPA fund alongwith pilot IGAs.

Coastal Plantation -

- Planning for coastal plantation component in Balasore & Bhadrak WL divisions started. Accordingly DFOs prepared scheme for mangrove & casuarina plantation with sensitization of local community.
- Nursery works for raising mangrove plantation over an area of 340 ha. in the 2-WL Divisions started.
- Nursery works for Casuarina

plantation started for proposed 50 ha. plantation in the coming year.

Non-JFM Interventions -

- Project has a provision to raise 19,000 ha. or Teak plantation in non-JFM mode. Accordingly DMU Chiefs of various divisions furnished list of identified areas and project fixed targets of 800 ha. for 2008-09 and 7400 ha. for 2009-10.
- Project started the process for Construction / renovation of forest roads, link roads to VSSs and maintenance of Forest boundaries to consolidate the interventions in the 1st batch JFM sites.

IEC Activities

- Quarterly Newsletter.
- Process documentation of different capacity buildings

programmes.

- Micro-Planning Facilitators Handbook containing different formats & instruction to fill up these formats to help facilitators in assisting in micro-planning exercise.
- Flip-chart in Oriya on micro-planning for community understanding.
- Regular updation of project Website : www.ofsdp.org.
- Different Posters & large format flex on Micro-planning, Forestry & community development works.



Highlights of 3rd year (2008-09 activities)

1st yr of the project (2006-07) was preparatory phase, in which project established various logistics at grassroots, strengthening of the PMU, field establishments, re-organisation of field forest structure & computerization upto FMU level. Activities for survey & mapping of forest areas, capacity building of forest personnels & expert support augmentation for assisting in various project activities were established in this 1st year.

2nd yr. project completed organization of VSS structure in 1st batch areas with construction of VSS office-cum-meeting hall. Various pre-requisites for undertaking micro-planning were completed in this phase. Micro-planning was completed in 1st batch sites & intervention started on the basis of prepared micro-plans. At the end of 2nd year various forestry & livelihood promotion activities were in progress. Simultaneously project also started preparations, such as survey-mapping, organization of VSS structure and capacity building for 2nd batch interventions.

3rd financial year i.e. 2008-09 activities continued with required interventions at different stages in 3-batches. Highlights of activities taken up in this year are as follows -

Executive expositions -

- Annual Plan for 2008-09 was approved in the 6th Meeting of the Governing Body held on 18th August, 2008 and Budget was approved by HPC in its meeting held on 10th Decembter, 2008.
- 1st General Body meeting of OFSDS was held on 9th June, 2008, and affairs of society were discussed and the Annual Report for the year 2006-07 was adopted.

Capacity Building -

- Regular capacity building programmes on different aspects of project execution were conducted at PMU level and project officials were also sent for training at other state/national institutions on different aspects.
- 12 focused training prgrammes and also exposure visits for representatives of each VSS. 61860 VSS members and facilitators participated in these trainings.
- 1004 VSS representatives were exposed to best practices within the respective DMUs, and 325 VSS representatives were sent on exposure visits to "Western Orissa Rural Livelihood Project" sites in





Kalahandi, Nuapara, Bargarh, and Bolangir Districts.

- GC and Field level Experts provided regular input in effectively organizing the training programmes to DMUs and FMUs.
- Focused training programmes were organised for frontline staff by the 11 Forest Divisions and 3 Wildlife divisions.
- DMU level crosslearning for defining the convergence potential were conducted in 8 district level workshops with the facilitation support of PMU and General Consultants. District level prospective institutions were invited in these workshops for identifying potential activities.
- Following the evolution of a structured format and step-by-step process for preparation of Micro-Plans for EDCs, a core group of FEOs and VFWs were trained for preparation of EDC Micro Plan organised at Tikarpada.
- **National Cross Learning Workshop:** National Cross Learning Workshop on "Promoting Sustainable Livelihoods under JICA assisted Forestry Projects in India" was organized on 24th-25th February 2009 at Bhubaneswar. This first Workshop of its type in the country, provided a platform for sharing of experiences amongst JICA Assisted and other Forestry Projects in the country.



- Establishment of demonstration plantations of best Casuarina provenances only in Balasore in collaboration with Institute of Forest Genetic and Tree Breeding (an ICFRE Institute) Coimbatore.

Research -

Following Research studies were started:

- Analysis of previous teak trials and their documentation with a view to take the teak research further.
- Growth and Yield of Phasi (*Anogeissus acuminata*), detailed research plan under preparation.
- A meeting on 'Fly Ash in Forestry' particularly in raising nurseries was held on 15th January, 2009. PMU is also associated with R&D related to use of "fly-ash in forestry" funded by the DST Government of India implemented by the Institute of Materials and Metals Technology, Bhubaneswar.

Forestry Interventions -

Restoration of Degraded Forests

- 1st Batch JFM sites (610 with Gross Forest Area of 64205.8 Ha. with RDF treatment area of 42652 ha. Area treated during the year were: 36936.5 Ha of ANR, and 4767 Ha Block Plantation - 2647 ha. of NTFP, 742 ha of Fuel and Fodder, 449 ha. of Bamboo, and 930 ha. of Economic spp., along with Soil & Moisture Conservation measures as per comprehensive Micro Plans prepared by the respective VSS, facilitated by the FMU (Forest Range) Officials and partner NGOs.
- As a part of State's mass plantation drive on 7th July 2008, 5,97,937 seedlings were planted at different sites in the 14 project divisions.
- Pre-planting operations including identification of treatment areas, ANR silvicultural cleaning, and establishment of nursery for plantation interventions in progress.
- 350 km fire lines cleared in 1st batch plantations during January, 09 and are maintained by VSS members.



Annual Activity Report 2008-09
Orissa Forestry Sector Development Project



- Micro Plans for 652 - 2nd batch JFM sites were prepared covering a gross forest area of 64970 ha., and RDF intervention over 48396 ha.
- The CFs and DFOs were instructed to assess the suitability and adequacy of the interventions proposed in the Micro Plans after field visits to take necessary corrective measures and also to identify additional suitable area for block plantations.

Coastal plantations

- Mangrove plantation were raised over 320 ha. After extensive consultations with different stakeholders, and field visit by the GC expert on "Mangroves" in Balasore and Bhadrakh a Technical Manual (draft) for Restoration of Mangroves was prepared and sent to all concerned for guidance and suggesting improvements based on field observations / experiences.



- Maps on 1:10000 scale in Bhadrakh and Balasore WL Divisions for areas coming within 3 km of the coastline, based on satellite data were got prepared by ORSAC, for selection of areas for mangrove restoration efforts target for the next year (2009-10) was fixed at 927 ha.
- JFM committees - Eco-Development Committees (EDCs) for coastal interventions were established and the strategy for community participation for restoration of mangroves defined.

- Formation of EDCs, preparation of Micro Plans for the villages in the vicinity of mangrove restoration areas, land preparation - fish bone channels to enhance inflow of tidal water, and nursery works.
- Casuarina plantations were raised over 50 ha. during 2008-09.

Biodiversity Management

- Strategic action plan for Bio-diversity conservation and Eco- Development in Satkosia Wild Life Division prepared.
- Formation/revival of EDCs and preparation of micro plans in 5 villages in one of the four clusters in Satkosia WL division.
- EDC Micro Plans were prepared in three villages, and funds for preliminary activities aiming community mobilization were released.
- As a part of community mobilization and an effective mechanism to mitigate man-elephant conflict, interventions for solar power fence around the villages were initiated in Purunakote. Detail cluster development plan to be evolved after completion of Micro Plan in remaining EDCs.
- Analysis for Development of Eco-tourism sites was initiated.
- Work initiated for development of website to promote eco-tourism (as compared to nature based and other forms of eco-tourism).
- Process for selection of sites for Natural Heritage, Community and Conservation reserves initiated and final plan to be prepared in consultation with PCCF Wild Life, Orissa, in accordance with the decision taken at the Governing Body meeting held in March 2009.

Livelihood interventions -

- Along with the forestry interventions, Community Development works including construction of VSS office-cum-meeting halls, EPA activities and ranking of SHGs for taking up IGA in 2nd Batch VSS were take up.
- Capacity Building of all categories of stakeholders



primarily for the VSS representatives through training and exposure visits were continued.

- Efforts have been made to focus EPA in addressing the concerns related to drinking water, through establishment of new dug/tube wells and repairing/



renovation of non-functional ones, providing agricultural equipment - multi-purpose water harvesting structures - renovation of ponds along with pisciculture, provision of solar lights, spot lights for crop protection from elephants, bathing enclosures for women, weighing balance in all VSSs, transistors for listening to AIR programme on agriculture/horticulture/forestry.

Income Generating Activities

- Pilot IGAs were taken up with a view to understand preferences and capabilities of the target people.
- 341 SHGs availed loans from VSS revolving fund and started various income generation activities of their choice.



- Preference of SHGs for activities were vegetable cultivation, bulk trading in agricultural produces, NTFP, Agriculture including cash crop cultivation.

- Livelihood Opportunity Analysis was got conducted through MART for potential forest and non forest resource based commodities. MART submitted draft report listing 20 focused commodities, their business plans, and facilitating project interventions, which was under scrutiny at the PMU.
- Simultaneously, evolution of an action plan for grounding focused IGAs was initiated by the PMU with the assistance of GC Experts.

Non-JFM interventions -

- Teak Plantation raised over an area of 625 ha. Post planting operations in these sites were taken up. Target of 7400 ha. was fixed for the year 2009-10 (2009 planting season) and funds were released to the DMUs for pre-planting operations.
- A permanent nursery with mist chamber facility was established at FRC Angul. More such permanent nurseries are proposed to be established as per requirement.
- Consolidation and demarcation of the forest boundaries taken up in selected forest blocks containing JFM intervention sites.





Monitoring & Evaluation -

- Household Level Socio-economic Baseline Survey completed in 207 sample VSSs from 1st and 2nd batch VSSs, and 11 control villages. Draft report under scrutiny.
- Independent Third Party Verification: PMU initiated annual independent third party verification of the assets created under the project for greater transparency and accountability.
- Auditing of OFSDS accounts by the Internal Auditors were completed up to the year 2007-08.
- Audit of Accounts of VSSs for the year 2007-2008 completed.
- SAMEEKSHYA- 2008, the 1st State Level Annual Review Meeting was held on 28th and 29th Jan 2009 at Bhubaneswar.

Information-Education-Communication (IEC) -

- Operational Guidelines for Entry Point Activity (EPA).
- Quarterly newsletters (both in English and Oriya), and posters on forestry & livelihood issues.
- Annual Report for 2006-07.
- EPA Guidelines (English-Oriya)
- JFM Resolution-2008.
- VSS Gathan 'O' Parichalna.
- Project at a Glance on the activities of the project.
- Project Activities were highlighted through AIR under the Forests department Programme - Banani, and interactive programme GRAMSAT.
- The jingles on "Project" and "Forest fire prevention" are also broadcast through Banani.
- Various informative posters and process documentations on conducted workshops/trainings.



Activities 2008-09 in detail....

Approval of Annual Action Plan for 2008-09

Annual Action Plan for 2008-09 and proposed requirement of funds was approved in the 6th Governing Body Meeting after reviewing the progress of the project. Budget was approved by the HPC.

Approved Annual Plan was sent to all DFO-cum-DMU Chiefs and CFs for execution of the planned activities.

With each progressing year project is diversifying into more complex realm. With the adoption of more activities and interventional areas, previous reporting methodology is being modified with classification of different activities in chapters on the basis of following major project components:

1. Institutional Development & Auxiliary Support-	Capacity Building / Trainings / Exposure	Vermi-Compost
(a) Executive Level [PMU, DMU, FMU]	Micro-Planning	Non-JFM (Teak Plantation, Forest roads infrastructure-Link Roads, Connectivity of JFM sites, Forest boundary maintenance)
Capacity Building / Meetings / Workshops	2. Forestry Interventions -	3. Livelihood Interventions -
Survey & Mapping	JFM (ANR / SMC / Block Plantation)	Livelihood Promotion
Research	Coastal Plantation (Mangrove / Casurina)	Income Generation
Convergence	Biodiversity Management	4. Monitoring & Evaluation
(b) VSS Level	Nursery Establishment	5. IEC Component
VSS establishment	Farm Forestry	6. Way forward ... Planning for 2009-10





Institutional Activities

Executive Level [PMU, DMU, FMU]-

Strengthening of Executing Body

Computerized management / monitoring system at PMU:

Majority of equipment/facility had already been procured. Additional equipments were procured for establishing the computerized management / monitoring system at PMU including basic GIS cell, and at the DMUs. In addition, internet connectivity up to FMU level facilitated to ensure better flow of project related data and information.

Survey Equipment for DMUs/FMUs

Procurement of 85 GPS equipment was completed by the DMUs during this year for which funds had been released during 2007-08.



Executive Meetings

HPC Meetings - High Power Committee meeting was held at Secretariat on 10th December to review the implementation status and progress of activities. Chief Secretary and President of OFSDP Sri Ajit Kumar Tripathy, IAS presided over the meeting.



Governing Body Meetings - Two meetings of the Governing Body were held during the year:

- 6th meeting of Governing Body was held on 18th August, 2008, Chaired by Sri S.P. Nanda, IAS, Agriculture Production Commissioner and Chairperson of the Governing Body. Progress of the project activities was reviewed and Annual Action Plan for 2008-09 and budget approved in this meeting. Besides this Governing Body



also approved the engagement of Chartered Accountant Firm for the financial year 2008-09 and 2009-10.

- 7th Meeting was held on 18th March, 2009 under the chairmanship of Sri S.P. Nanda, IAS, ACP-cum-ACS and chairperson of the governing body. Project progress was reviewed and decisions on recruitment of technical personnel for Project GIS/MIS, concurrent monitoring of project works through third party verification process taken up during the meeting. Annual report for 2007-08 was also approved in the meeting.



General Body Meeting - 1st meeting of the General Body of Orissa Forestry Sector Development Society was held on 9th June, 2008 in the 2nd Floor Conference Hall of Secretariat. Shri S.P. Nanda, IAS, Agriculture Production Commissioner & Vice-President of the Society presided over the meeting. The 'Affairs of the Society were discussed and the Annual Report of the Society for the year 2006-07 was adopted.



Capacity Building

Project lays special emphasis on Human Resource Development, particularly of the participating communities organized as VSSs and SHGs.

Capacity Building programmes were organized both for the facilitating personnels and the communities during the year. For executive level capacity building several training programmes were organised on various aspects. Project officials also participated in training programmes organised by other resource agencies on project relevant subjects.

PMU Level Capacity Building Programmes-

Reorientation Trainings on Micro-Planning for facilitators were organized in 3 batches in July, 2008 by the PMU. In all 10-Range Officers, 52-NGO Team Leaders, 23-FEOs & 2-Development Officers from 11 project forest divisions participated.

The main purpose of these trainings was to refresh the basic concepts of and approaches to microplanning followed by the project as also to share learnings from the experience gained during preparation of micro-plans in the first batch VSSs during 2007-08.





Interactive Meeting with Chief functionaries of Partner NGOs - An interactive meeting with Chief functionaries of partner NGOs was organised at the PMU on 16th July, 2008, wherein the Project Director elaborated on different activities to be carried out and emphasized upon the crucial role of NGOs in seeking convergence with the other govt. programmes / schemes for overall development in project area.



explained the proposed MIS by the M&E Expert of the General Consultants Shri Shalabh Bharadwaj, and PMU MIS Technician Mr. Swadhin Mohanty.

The focus was on the importance of a 'uniform', 'simple' and 'workable' MIS tool, for systematic data collection, timely reporting and easy compilation at each implementation level. Formats developed were discussed in detail.

Livelihood Visioning & Promotion Strategy - A one week training programme on 'Livelihood Visioning and Promotion Strategy' from 15th to 19th Dec, 08 was organised at PMU with the facilitation from 'The Livelihood School', Eastern India Regional Centre, Kolkata. 22 VFWs (VSS Member Secretaries) from 11 project divisions participated.



Training on Management Information System - For understanding different plantation related MIS formats and reporting system being evolved by the project consultants, a one day Orientation-cum-Training was organised on 4th Dec. 2008 at PMU, Bhubaneswar. Three officials from each Project Division namely FEO, VSS Member Secretary and Data Entry Operator participated in the training. A total of 34 persons were



Main objective of the training was to prepare the key forest personnel for the upcoming livelihood interventions through clear understanding of livelihood concepts, promotional strategy and socio-economic dynamics in defining different interventions. Another objective was appreciation of different tools and techniques for identifying interventions, market condition, forest produce, dynamics of local economy, synergetic collaboration with other government and non-government initiatives.

Training on Accounting Procedures - organised on 16th to 17th January, 09 at PMU Bhubaneswar, 16 FEOs & 10 DMU staff were trained on OFSDP Accounting Procedures.



By Xavier Institute of Management, Bhubaneswar-

'Project and Time Management' - A 3 days training on 'Project and Time Management' was organised from 26th to 28th May, 2008 at Xavier Institute of Management, Bhubaneswar for the DMU Chiefs and Asstt. DMU Chiefs.

Community Mobilization & Institution Building organised at XIM, Bhubaneswar from 3rd to 5th November, 2008 at which 22 Member Secretaries (VFWs) participated.

Communication & Presentation Skills organized at XIM, Bhubaneswar from 22nd to 24th December, 2008 at which 21 VFW - Member Secretaries participated.

By other external agencies -

Baseline Survey - NABCONS organised a training on Baseline Survey for 20 survey personnel on 12th Sept. 2008 at NABARD Regional Office, Bhubaneswar. The training was aimed to guide the survey personnel on the questionnaire and to provide them a common understanding of the survey methodology.

NTFP based Micro Enterprise, Value addition & Marketing - organised at Bhubaneswar from 12th to 16th January, 09 by EDI, Ahmadabad, 6 FEOs, 12 VFWs participated from the project.



Integrated Community Development Training - from 2nd - 6th Feb, 09 at National Institute of Rural Development (NIRD), Hyderabad - 2 DFOs, 1 ACF, 12 ROs, 2 DPDs & 1 JPD participated.

The theory and practices of Bio-fertilizers - for Nursery & Plantation improvement was organized at Department of Forestry, OUAT, Bhubaneswar on 17th to 18th February, 09 where 20 field officers (FEO, RO and VFW) were trained.

DMU Level Trainings -

Soil & Moisture Conservation measures - Soil & Moisture Conservation (CCT) training was held in Koraput DMU on 9th & 10th September, 2008 where 46 officials (ROs, FEOs, Foresters, VFWs, VSS representatives) participated.

Another training was held at Orissa Professional Development Service Consultant (OPDSC), Rayagada, coordinated by DFO-cum-DMU Chief Rayagada from 25th February to 1st March, 09 where 2 ROs, 11 FEOs, 15 VFWs participated.

A detailed Calendar for VSS and SHG trainings to be organised by DMUs/FMUs was prepared and sent to all DMUs / FMUs for enhancing capacity of the participating community.



Natural Resource Management & Conflict resolution was held on 22nd to 26th December, 2008 at Administrative Staff College of India, Hyderabad. 14 officers (Project Director, CFs, DFO-cum-DMU Chiefs, Dy PD (T) participated.

Study / Exposure Visits-

Advance Nursery Techniques - As part of advance training on Nursery Techniques project had sent one group of project officers to Maharashtra during 2007-08. This year another group of 15 officers (DFOs, ACFs, JPD, and DPD) were sent from 15th to 22nd April, 2008. Overall objective of the study/exposure visit was to build the capacity of the OFSDP officials - enhancement of knowledge on various nursery techniques including Root Trainer Nursery.

Study tour on Eco-Tourism to Bangalore - Six officers (CFs and DFO) were sent on a study visit to the Jungle Lodge & Resorts, Karnataka for exposure on Principles, Concept & Development of Business module on Ecotourism as adopted in Karnataka, where several Eco-tourism properties situated adjacent to notified protected areas (wildlife habitats) are being managed by state owned corporation - 'Jungle Lodges and Resorts' which is a well known brand in tourism sector.

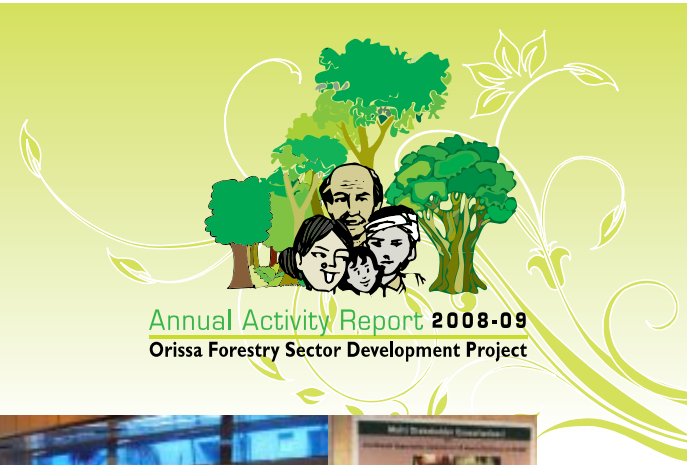
Exposure visit to Maharashtra for Agri-ecotourism development and the Soil & Moisture Conservation

Project sent its 17 officers (ACFs and Range Officers) to Maharashtra to study different successful interventions and their adaptation in the project areas. The officers visited Saguna Baug, Sanjay Gandhi National Park, Rashmi Gardens and Hivare Bazar from 22nd-26th September'08. Visiting team shared their views & learnings on Agri-Ecotourism and Soil Moisture Conservation measures in a meeting chaired by the Project Director.



Environment friendly entrepreneurial skills being used at Saguna Baug for managing tourist places and innovative integration of different income generating activities like Dairy farming, Tourist Cottages, Pisciculture and gardens; Man-Animal conflict resolution in the densely populated peripheral areas of Sanjay Gandhi National Park; Development of Eco-guides and relevance of Bio-diversity and its management particularly picnic places, waterfalls etc. were some of the replicable ideas. The techniques used in Soil and Moisture Conservation measures at different places can be of immense use in the project areas.

Project Director advised the ACFs and ROs for using the learnings in the project areas, and benefits to the VSSs from the different techniques seen by them during the visit.



Workshops -

Regional External Assistance Workshop (Ranchi- 23rd & 24th June, 2008)

A two day regional workshop on projects assisted by external funding agencies was organised by the Ministry of Finance, Govt. of India. Workshops main objective was to provide a



forum for the external development partners (JBIC, WB, ADB) and the States in the eastern region to understand the process and priorities for external assistance. Project Director Sri Arun K. Bansal was a member of the team of officers from Orissa led by Shri R.N. Senapati, Principal Secretary, Finance.

State Level Consultation Workshop on - Livelihood Opportunity Analysis

State level consultation workshop was organized on 5th November at Bhubaneswar on 'Livelihood Opportunities Study' being conducted by MART for the project. MART shared the



findings and preliminary analysis of the study, highlighting major livelihood opportunities across Agriculture, Horticulture, Non-



Timber Forest Produce, Non-Farm and Off Farm sectors which can be taken up for detailed value chain analysis.

Besides officers of OFSDP, representatives from NABARD, ORMAS, TRIPTI, WORLP, OCTMP, UDYOG VIKAS, TDCC, QUAT and representatives of NGOs - CYSD, FES, CPSW, PRADATA, IAEET and HDI attended the workshop. Consulting agencies -CTRAN, ACCESS, EDII, Aide-et-Action also participated in the workshop.

The 'Livelihood Opportunity Analysis' will form the basis of launching focused income generation activities under the project.

Workshop on Teak Plantation

A workshop for reviewing the progress & status of Teak plantation under the project was held on 15th October, 2008 at PMU, in the background of slow progress primarily due to delay in selection of suitable areas, which was highlighted by the PD in his opening presentation. PCCF Orissa explained the need of careful planning & execution of the project components and emphasised the need for expediting the selection of suitable areas for teak plantation.





Project organized series of cross-learning workshops covering the 11 project divisions for exploring the convergence possibilities with respect to IGA support system and defining strategy for coordination at field level. District being an important unit for Governance and Project also has District Advisory Committee comprising of most the line departments in each district, it was thought pertinent to organise cross-learning workshops at district level. On this basis 8 district level one day workshops covering 11 DMUs were organised under the Chairmanship of the DMU Chiefs during 10th to 27th November, 2008. Facilitation support was provided by the PMU and Project Consultants.

Sl.	Place	Divisions	Date
1.	Angul	Angul	10 th Nov 08
2.	Koraput	Koraput, Jeypore	11 th Nov 08
3.	Phulbani	Phulbani, Balliguda	14 th Nov 08
4.	Rayagada	Rayagada	14 th Nov 08
5.	Deogarh	Deogarh	21 st Nov 08
6.	Keonjhar	Keonjhar	22 nd Nov 08
7.	Parlakhemundi	Parlakhemundi	25 th Nov 08
8.	Rourkela	Rourkela, Bonai	27 th Nov 08

Exploring IGAs & Convergence Potentials

DMU Level Cross-Learning Workshops



The participants included the DMU Chiefs/Asst DMU Chiefs, FEO (IGA), Field Expert of the GC, FMU Chiefs, and NGO Team Leaders.

Representatives from different livelihoods promoting agencies/ institutions/ projects participated in these workshops. In the eight workshops, about 20 different livelihoods promoting agencies shared experiences. On an average, project stakeholders got opportunity to learn from several livelihood promoting agencies who are providing Capacity Building/Skill Development, Finance, Marketing and Technology support for rural IGAs.

Major Institutions invited during these workshops -

ARD	Animal Resources Development Department;
ATMA	Agriculture Technology Management Agency;
DAO	District Agriculture Officer;
DIC	District Industries Centre;
DRDA	District Rural Development Agency;
DSW	District Social Welfare Officer;
JSS	Jan Sikshya Sansthan;
KVK	Krishi Vigyan Kendra;
MART	Marketing and Research Team;
NABARD	National Bank for Agriculture and Rural Development;
NGO	Non-Government Organization;
NHM	National Horticulture Mission;
OBDA	Orissa Bamboo Development Agency;
ORMAS	Orissa Rural Marketing Society;
ORUPA	Orissa Rural and Urban Producers' Association;
OTELP	Orissa Tribal Empowerment & Livelihoods Projects;
OUAT	Orissa University of Agriculture and Technology;
PBDA	Pahadi Bhuyan Development Agency;
TDCC	Tribal Development Cooperative Corporation



Annual Activity Report 2008-09
Orissa Forestry Sector Development Project

CFs and DFOs were directed to select further areas (in addition to the areas already planted during 2008 planting season) from the forest areas allocated to "Plantation and Improvement Working Circle in the respective working plans" after assessing the suitability through site inspections.

Other matter discussed were - defining the seed procurement and sourcing process for meeting the requirement of seeds,

provision of 50,000 root trainer teak seedlings for planting in next planting season and consequent improvement of permanent nurseries with the services of the staff trained in exposure visits.

Improvement works for enhancing production of quality seeds by silviculturists and taking up of R&D related to seed certification, teak plus trees were also deliberated upon.

National Cross-Learning Workshop on Livelihood Promotion



National Cross Learning Workshop on "Promoting Sustainable Livelihoods under JICA assisted Forestry Projects in India" was organized on 24 to 25th February 2009 at Bhubaneswar. Delegates from 9 JICA- assisted Forestry Projects (Himachal Pradesh, Tripura, Uttar Pradesh, Karnataka, Tamil Nadu, Sikkim, Punjab, Haryana and Gujarat) and four neighbouring States (West Bengal, Andhra Pradesh, Chattisgarh, and Jharkhand), JICA India and JICA Tokyo Office, Government of India, Conservator of Forests and DFO-cum-DMU Chiefs, officers from PMU, General Consultant

experts, Forest & other line department Officers from Orissa participated in this workshop.

This, first of its type national workshop, provided a platform for sharing of experiences amongst JICA Assisted and other Forestry Projects in the country. The recommendations based on deliberations on presentations by different states, and group discussions that emerged from the workshop have been communicated to all concerned for the benefit of all the JICA assisted Forestry Projects.





Survey & Mapping -



During the year project completed the demarcation & mapping of 2nd batch JFM sites and proposed gross treatment areas for restoration of degraded forests. Detailed mapping of the JFM sites was done including DGPS boundary survey and satellite image interpretation with ground verification for vegetation status, and 1:5000 scale thematic maps were prepared by the contracted firms for each of the sites.

The mock-up for the maps were refined highlighting vegetation and terrain condition to facilitate better Micro-planning. Different type of vegetation specie and age class in the treatment area were defined in specific color codes on the lines of stock maps. Terrain conditions for different elevation were refined and illustrated through elevation lines and density of forest was defined through shades.

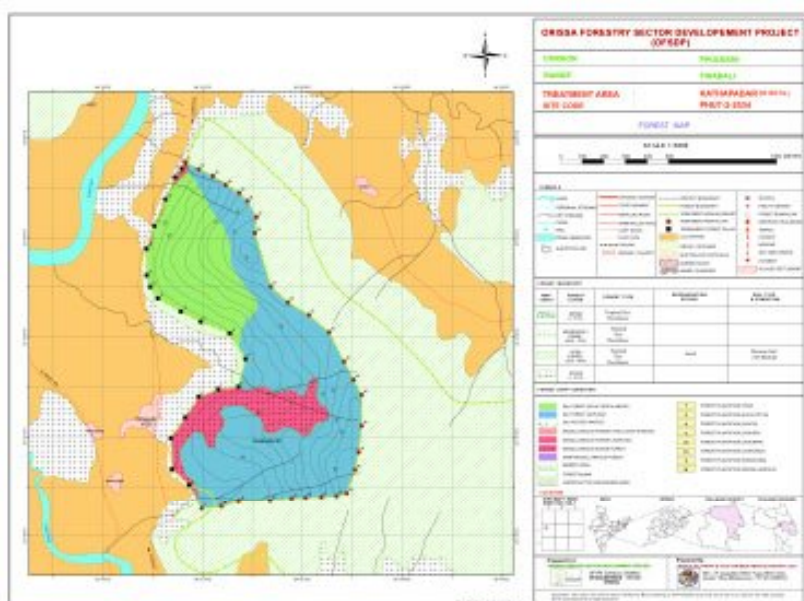
Thematic maps were developed with different layer combinations as under-

Base Maps: depicting boundary pillar coordinates, treatment area boundary, VSS Village, Roads, Drainage System, Forest area, Quarries, Schools, Health Facilities, Forest establishments etc.

Land Use Maps: depicting basic topographic features with detailed land use of treatment area and indicative land use of peripheral area.

Forest Maps: depicting basic topographic features with forest class, forest types, species, crop density, slope etc.

All the maps were verified by the respective DMU officials.





Research

Following research topics have been identified:

- a. Analysis of data of previous teak trials and their documentation with a view to take the teak research further. Funds have been released to Silviculturist, Bhubaneswar for proper maintenance of teak seed production areas at Chulijhinka.
- b. Study on Growth and Yield of Phasi (*Anogeissus acuminata*), for which detailed research plan is under preparation at the PMU. This has unique place in Orissa culture, as it is an important species used in preparation of the chariots of Lord Jagannath.



- d. Establishment of demonstration plantations of best *Casuarina* in Balasore in collaboration with Institute of Forest Genetic and Tree Breeding (an ICFRE Institute) Coimbatore.



- c. A meeting on 'Fly Ash in Forestry' particularly in raising nurseries was held on 15th January, 2009. Project is also associated with R&D related to use of "fly-ash in forestry" funded by the DST Government of India implemented by the Institute of Materials and Metals Technology, Bhubaneswar.

- e. Field experiments are being conducted in Balasore WL Division on nursery techniques of different mangrove species.



"Forestry Advisory Group" has been constituted by the PMU for advising on forestry related research topics and consequent action.



Convergence with other programmes -

OFSDP aims to capitalize on various developmental interventions being undertaken by different gov't/non-gov't agencies to enhance the efficacy of the project interventions, specifically for livelihood promotion and sustainable income to the community. Hence convergence with other developmental agencies / line departments is the most desirable option to complement the efforts of stakeholders under OFSDP.

In this perspective, after preparation of micro-plans and assessment of the requirements of the villages, project is making all out efforts to explore convergence with programmes of other agencies and line departments. Chief Secretary, Orissa has issued specific instructions to the District Collectors of the project districts for facilitating the process. This will provide required boost to the efforts of the project officials in defining convergence for upcoming livelihood related interventions.

- Department of Animal Husbandry is supplying bucks through its clusters to the project areas to improve the goat breed and thereby by enhanced production per unit. They are also promoting Vanaraja Chicks in the project villages to increase the income level of the forest dwellers.
- Subsidies provided by Department of Agriculture for Agricultural implements / machinery available to individuals have been extended to the VSSs and SHGs, this will help in creating more assets under the Project.
- In many areas rural sanitation works are being taken up through Rural Water Sanitation Mission (RWSS).
- Department of Horticulture is supplying hybrid seeds for various types of fruits and also planting stock for use in JFM sites.



Besides this project has conducted DMU level cross-learning workshops with the district level resource institutions and line departments for understanding the convergence support system and coordination scenario for assisting in IGA augmentation process under the project.

Some of the project initiatives in this direction are -

- National Rural Health Mission has been requested to cover the project villages in NRHM activities like ASHA, GKS and other public health activities on priority basis. Mission Director has directed all the Chief District Medical Officers to give emphasis to the OFSDP villages.

- Gram Vikas an NGO has provided initial training for preparation of smokeless Chulha, which is being replicated to other project villages, considering the low cost inputs through use of local material & health benefits to rural women. Gram Vikas is also providing latrine and bathroom facilities in some of the project villages.

Convergence process is continually being explored at the field level and efforts are on to link the VSS with the ongoing development efforts for mutual benefit. VSSs are being trained for this purpose, so that besides the office-setup, local manpower can assist in development efforts.



Institutional Activities....

VSS Level -



VSS Establishment

VSS being the grassroots community institution for undertaking project interventions must have a robust executive structure with provisions of all the logistics support. With this objective efforts were made to continually evolve VSS capabilities during the course of implementation process.

1st batch VSS micro-planning was completed in 2007-08 and various interventions on forestry & livelihood were being undertaken by the VSS. Simultaneously support to these VSSs for capacity enhancement were also taken up.

As per the defined provisions & guidelines (VSS Management Manual) 2nd batch VSS organisational structure was established in this year. After that various VSS level activities for capacity enhancement for conducting micro-planning were started.

Besides the establishment of organisational structure, project is providing all the support for developing the VSS in a viable community organisation for sustainable development of forestry & livelihood. Some of the major steps taken -

- Provision of VSS Office-cum-Meeting Hall for all the VSS.
- VSS Logistics - For day-to-day functioning of VSS office, project has provided Furniture, Almira, Stationery items, lighting equipments and other meeting logistics to all the VSSs.
- Inclusion of most vulnerable community groups in VSS executive committee as per JFM Resolution.
- Engagement of an educated village youth as VSS Animator for assisting the VSS executive committee in various activities.
- Provision of VSS Revolving Fund for providing loans to SHGs/CIGs for income generation activities.
- EPA fund support is provided to each VSS for creating community assets, basic services such as drinking water, and logistics according to the need of the village.
- Revenue Generation Mechanism - Provision of "Village Forest Development Fund" (VFDF) with VSS through introduction of user fee on the created assets & usufructs from the forestry works.



S.P.Nanda, IAS, APC-cum-ACS and Vice-President of OFSDS in a project village, Deogarh Division.

- VSS as Village Resource Centre** : Each VSS is being developed in Village Resource Centre. Project is providing all the inputs required for handling village problems and macro-level (at PMU-DMU-FMU) efforts are on to establish an integration mechanism with the present development efforts for healthy convergence. Simultaneously intensive capacity building programme are being undertaken to prepare a motivated community for explorative efforts in future.

For this purpose project has developed several IEC materials in Oriya.

Provision of weighing balance in each VSS is a small but very useful intervention to prevent cheating by the unscrupulous traders operating in the interior areas.

VSS - Capacity Building

PMU with the assistance of the General Consultant Experts evolved a set of 12 focused training programmes and exposure visits for representatives of each VSS which was circulated to the DMUs and FMUs.

GC Experts, both the Capacity Building and field experts provided regular input for effectively organizing the training programmes by DMUs and FMUs. Methodology was gradually evolved with respect to programme content and delivery along with documentation and feed back for further improvement. Such programmes were organised by the 11 DMUs, other than the three wildlife divisions.

Though various training programmes were conducted at FMU & DMU level for grassroot forest officials, NGO teams, basically aimed at preparing them to conduct training for VSS Representatives. Project's main emphasis was towards comprehensive capacity building of VSS with respect of various aspects of project management such as VSS Management, Book keeping, conducting meetings, PRA process, micro-planning, forestry & livelihood related etc. Besides this specific trainings were conducted for animators, which will consequently reflect in regular VSS management activities.

In total 1256 nos. of trainings were conducted during 2008-09, in which a total of 70301 persons participated.



In respect of the Wild Life divisions along with evolving framework for preparation of EDC micro plans (Protected Areas and Mangroves), a core group of FEOs and VFWs were trained through preparation of Micro Plan of one EDC in Satkosia WL Division that was specially facilitated by the National Bio-diversity Expert of the GC. Subsequently, on-the-job training was provided to a group of officials from Balasore Wild Life and Parlakhemendi Forest Divisions for EDC Micro-planning which was organised at Tikarpara.



Exposure Visits -

- 1004 VSS representatives were exposed to best practices within the respective DMUs, and 325 VSS representatives were sent on exposure visits to WORLP sites in Kalahandi, Nuapara, Bargarh, and Bolangir Districts.
- Besides the exposure visits prior to micro-planning exercise, VSS & SHG members were also sensitized on IGA-processes & marketing avenues through exposure to Palishree Melas in their respective districts. These Palishree Melas provide a marketing platform & exposure to rural SHG products.



Micro-Planning -

After the formation of VSS working group and required capacity building in 2nd Batch areas, micro-planning exercise was completed with adequate PRA. Micro-planning booklets containing various formats were supplied by the project.

Whole exercise was facilitated by NGO Teams and frontline project officials as per the guidelines for micro-planning process.



Exposure to Palishree Mela

Deogarh DMU facilitated one such exposure for 35 nos. of SHG members from different FMUs to Palishree Mela jointly organized by DWMS & DRDA at Pradhanpat, Deogarh from 13th to 15th February, 2009. 3 groups consisting of 12-14 SHG members including Team Leader Partner NGO interacted with the persons present in the SHG stalls. Project SHGs learnt on procurement process, production techniques, credit facilities & marketing avenues for products ranging from handicraft, food products to different utility items of daily use like incense stick, candle etc.

Participants were happy and confident of getting the benefits through the learning.



Micro Plans for 652 - 2nd batch JFM sites have been completed covering a gross forest area of 64970 ha.

The CFs and DFOs have been instructed to assess the suitability and adequacy of the interventions proposed in the Micro Plans after field visits. Pre-planting operations including identification of treatment areas.



Forestry Interventions

JFM (RDF - ANR / SMC / Block Plantation)

1st year Forestry intervention in the 610 JFM sites (1st batch) were completed during the year. Activities for cutting of live high stumps to boost coppice growth, careful thinning to remove congestion and singling out dominant species, plants of medicinal/NTFP species for optimal growth continued during the year.

Area treated during the year were:

- 36936.5 Ha through ANR-Silviculture operation,
- 4767 Ha Block Plantation- 2647 ha. of NTFP, 742 ha of Fuel and Fodder, 449 ha. of Bamboo, and 930 ha. of Economic spp. along with Soil & Moisture

Conservation measures as per comprehensive Micro Plans prepared by the respective VSS.

As a part of State's mass plantation drive on 7th July 2008, 5,97,937 seedlings were planted at different sites in the 14 project divisions.

Micro Plans for 652 - 2nd batch JFM sites have been completed covering a gross forest area of 64970 ha., and RDF intervention area of 48396 ha. ANR silvicultural cleaning, establishment of nursery for plantation interventions and simultaneous soil & moisture conservation activities as per the requirement assessed in the prepared micro-plans are in progress.



ANR activities include silvicultural operations aiming at promoting regeneration, including singling coppice shoots in respect of timber species, dressing up of live stumps, removal of dead/dry high stumps, and tree planting in blank areas of about 1 ha. each.



Photograph of before planting at Baunajdes of Biramitrapur Range of Rourkela Division.



DMU Wise Area proposed for Treatment in 2nd batch sites (Areas in ha.)

Division	Sites	ANR	Economic	Fuel & Fodder	Bamboo & Cane	NTFP	Total
Angul	67	4221.0	15.0	38.0	0	58.0	4332
Balliguda	73	5182.0	182.5	129.0	65.0	195.5	5754
Bonai	21	1294	0	0	50.0	12.0	1356
Deogarh	62	5234.0	0	31.0	60.0	139.0	5464
Jeypore	44	3583.0	23.0	56.0	7.0	76.0	3745
Keonjhar	62	3098.0	69.0	74.0	10.0	0	3251
Koraput	69	4171.0	467.0	981.0	147.0	535.0	6301
Paralakhemundi	56	3181.0	15.0	4.0	0	6.0	3206
Phulbani	87	6823.0	135.0	187.0	33.0	133.0	7311
Rayagada	71	4005.0	178.0	225.0	40.0	511.0	4959
Rourkela	40	2999.0	57.0	20.0	12.0	27.0	3115
Total	652	43791	1141.5	1745	424	1692.5	48794



'Fine Tuning ANR to augment livelihoods and to promote in-situ biodiversity conservation'

Forest area to be treated under ANR constitutes almost three fourth of the total area under JFM mode in the project which requires ANR to be pro-livelihoods.

Project refined the strategy for ANR operations for enhancing the livelihood potential of the forests and conserving the biodiversity. Participatory approach is adopted with integration of local knowledge. Operations were decided to restrain (not to fell) and enrichment (planting/seeding) of important species for augmenting the biodiversity and increasing the livelihoods potential.

It was planned to design the ANR treatment as per local needs. For this purpose ANR component was proposed to be refined in micro-plans through local ecological interactions in terms of locality factors, species-associations etc. as well as the local knowledge system about the use and management of forest resources. A step-by-step approach was suggested to make ANR eco and livelihoods-friendly.

- **Ecological & Livelihoods Potential Assessment** of Forest Area conducted as part of PRA exercise for comprehensive understanding of the forest-ecosystem to be treated in terms of their present ecological status, livelihoods-dependence and potential for deciding the plantation model to be adopted. Information collected can be attached with ANR section in the Micro-plan and in the forest map.

- **Developing species Options for ANR** : Listing of important species for livelihood and biodiversity conservation drawn out through participatory process and the information collected in this step can be added as Species choice Matrix for ANR to the already available matrix for plantation in existing microplan in Forest PRA section. Livelihoods species will be decided from the species options for ANR. Listing of livelihood specific species will help the working group to plan for their seed collection and collect silvicultural information if required.
- **Designing ANR treatments**: On the basis of the obtained listing of important species interventional strategy for Species Retention, Seeding requirement and nursery raising is to be decided. The tending operations like cleaning, weeding, singling, stool cleaning etc.; cultural operations like SMC measures are to be carried out to supplement the species retention and species addition (seeding/planting).

For sensitizing the grassroot stakeholders about this process, project organised an orientation programme in one of the VSS site of Paralakhemundi Division on 2nd March, 2009. Related process guidelines in this respect were sent to all the Divisions for conducting such orientation programmes with the participation of VSS members for suitable incorporation of the process in amending the prepared micro-plans.





Soil and Moisture Conservation Measures:

SMC works started in 1st batch sites during 2007-08 continued with additional 2nd batch sites decided after micro-planning. Measures including gully plugging, contour bunds, staggered contour trench, saucer pits with trench ridge/trench mound were



taken. For this purpose technical support was taken from the officers of soil conservation dept and experienced forest officials. Detailed site specific treatment plans with estimates were prepared by technically qualified persons before undertaking the works. To enhance the quality and effectiveness of SMC works, project had taken initiative for improving the technical skills of the facilitating officials through specially designed training programmes. 2 DMU level trainings at-Rayagada & Koraput DMU were organised during the year for this purpose.

Fire protection:

Project envisages that the VSS members will protect their assigned forest areas from fire through regular patrolling and awareness creation for prevention of manmade fires. However, in vulnerable areas fire lines are required for protecting the plantations.

Any occurrence of the fire is to be quickly reported by the respective VSS to the FMU Chiefs and then DMU Chiefs along with the action taken by them for extinguishing the fire. The list of VSS in whose areas no fire occurs during the entire fire season will be prepared and compiled at the division level for providing no fire incentives as per the Project Memorandum.

As per the latest report of Forest Fire-2007 data, forest fire incidence is on higher side in Balliguda, Rayagada, Parlakhemundi, Keonjhar, Phulbani, Koraput and Angul Forest Divisions. Project has sensitized the VSSs related to protection of forest against fire.

Project has provisions for construction of fire line (5mt width) and its maintenance for further four years at limited to cost

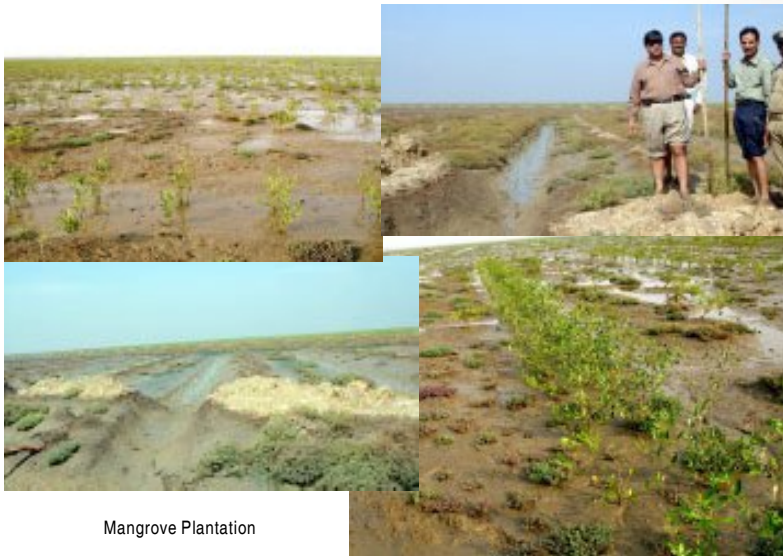
norm up to Rs.2520/ per kilometer extending over 1750 km during the entire project period. The fire lines are being established for the plantations sites.





Coastal Plantation (Mangrove / Casurina)

Mangrove Plantation -



Mangrove Plantation

Coastal plantation activity was prescheduled by one year and mangroves were raised over 320 ha.

After extensive consultations with different stakeholders, and field visit by the GC expert on "Mangroves" in Balasore and Bhadrak wild a Technical Manual (draft) for restoration of Mangroves was prepared and sent to all concerned for reference and guidance. Target for the year 2009-10 was fixed at 927 ha. Maps on 1:10000 scale in Bhadrak and Balasore WL Divisions for areas coming within 3 km of the coastline, based on satellite data were prepared through ORSAC, for

selection of intervention areas and planning site specific interventions.

Based upon the ground situation of flow of tidal water, other 3-types of treatment models were also planned besides the present Bani plantation in Fish bone channels for next year implemented.

1. Species like *Pongamia pinnata*, in up lands close to saline embankment, where tidal water flow is very infrequent.
2. Assisted Natural Regeneration (plantation of bani and other suitable spp. in gaps with provision for extension channels from existing natural creeks/channels, wherever required and feasible) in mud flats towards the sea front which support low density of mangrove plants
3. Planting hypocotyls in areas on sea front with daily inundation with tidal waters .

Moreover, in one/two year old Bani plantation enrichment planting of other species will also be taken up to increase biological diversity. For these new models details have been discussed with official of Bhadrakh WL Division, and field situation studied.



Mangrove Nursery



District	Division		Site & Area
Mangroves			
Balasore	Balasore WL	50 ha.	Bichitrapur
		30 ha.	Kansabansh river mouth
Bhadrakh	Bhadrak WL	60 ha.	Gouriprasad
		180 ha.	Mohanpur
Total		320 Ha.	
Casurina			
Balasore	Balasore WL	5 ha.	Udaipur
		10 ha.	Krushan Nagar,
		8 ha.	Ranakotha PRF (Khadibil),
		12 ha.	Parikhi PRF (Bagda)
		3 ha.	Ramsingpur PRF (Dakhin)
		5 ha.	Udaypur PRF (Ganbharua)
Bhadrakh	Bhadrak WL	7 ha.	Nandpur
Total		50 ha.	

Casurina Plantation -

Casuarina plantations were raised over 50 ha. during 2008-09.

For the year 2009-10, 12 ha. area has been selected in Balasore WL Division. Since suitable blank areas are not available, a scheme was prepared by the Working Plans Officer Baripada, under the supervision of CF Baripada, for harvesting and replanting of old /mature coastal Casuarina shelter belt plantations. The Scheme was recommended by the PCCF WL to the State Government for approval.



Casurina Plantation in Balasore WL Division



Community Participation in Restoration of Mangroves -

Consequent to the enabling provision for JFM committees in Mangroves areas, strategy for community participation for restoration of mangroves was established & deliberated upon with field officers. Consequently community was organised in Eco Development Committees (EDCs) for starting interventions after micro-planning process. Detailed guidelines for preparation of "EDC Micro Plans" involving the community in the adjoining villages have been evolved by the PMU along with standard Micro Plan Format. Formation of EDCs, preparation of Micro Plans for the villages in the vicinity of mangrove restoration areas, land preparation - fish bone channels to enhance inflow of tidal water, and nursery works were taken up for raising plantation during 2009 planting season.

Micro Plans have already been prepared in 5 EDCs in respect of the plantation raised during 2008-09, and approved for 2 EDCs which will be implemented in the coming year.



Collection of Fish from Mangrove Restoration Area



Collection of Grass from Mangrove Restoration Area

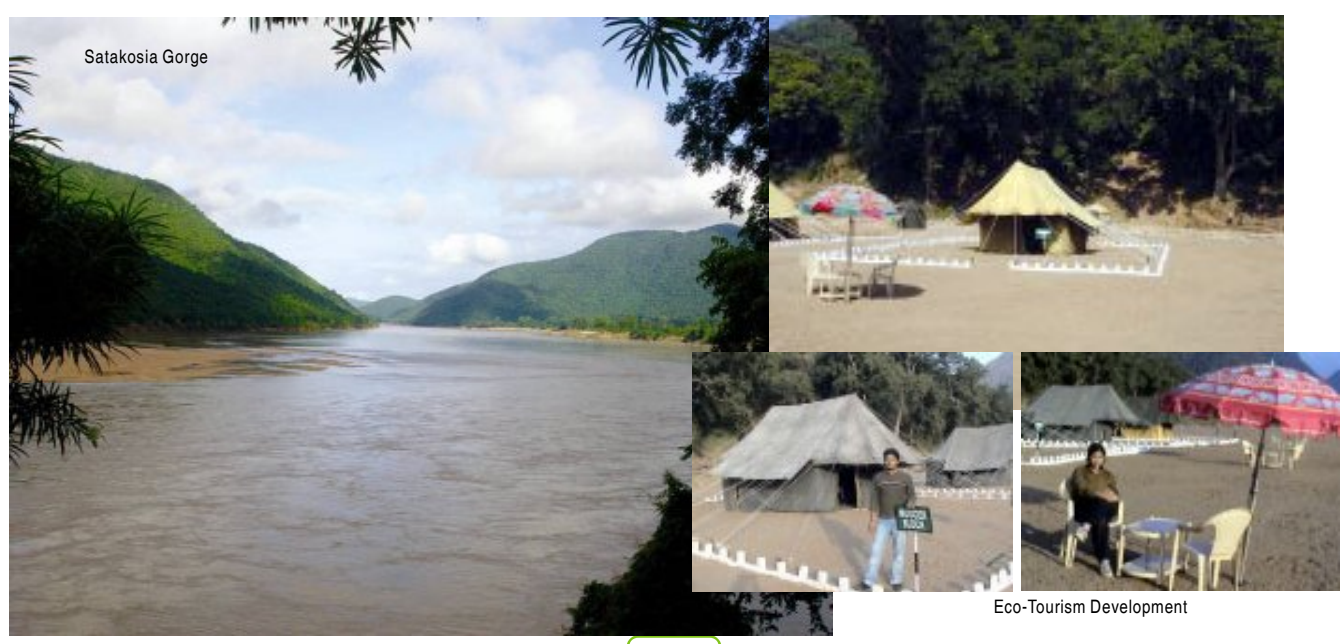
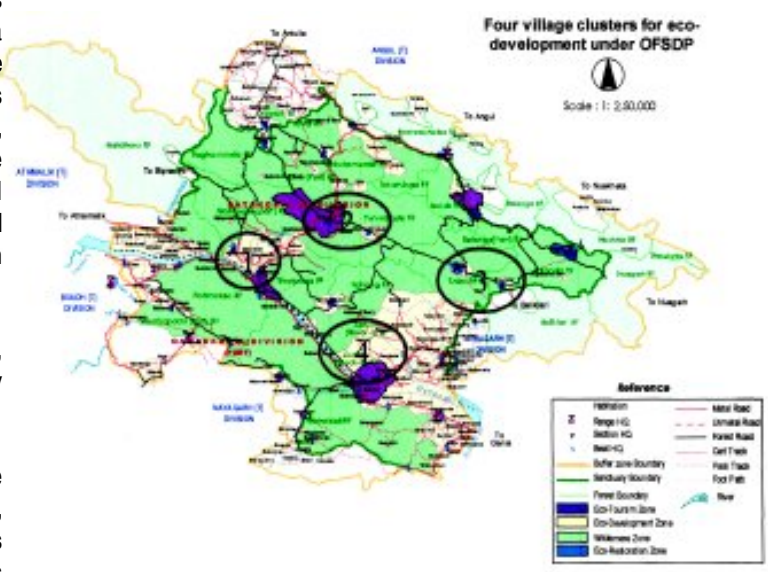


Biodiversity Management

A draft framework for Bio-diversity conservation and Eco- Development in Satkosia Wild Life Division was prepared by General Consultant Experts, following a participatory/consultative approach involving the primary stakeholders i.e. the villagers. Four clusters namely Purunakote, Tikarpara, Tulka and Jilinda, comprising 19 habitations around the core area were identified for intervention in phases. Formation/revival of EDCs and preparation of micro plans were initiated in 5 villages in one (Purunakote) of the four clusters in Satkosia WL division.

EDC Micro Plans have been prepared in three villages, and funds for preliminary activities aiming community mobilization, have been released.

As a part of community mobilization and an effective mechanism to mitigate man-elephant conflict, interventions for solar power fence around the villages have been initiated in Purunakote, following the success





of solar power fencing around villages to reduce man-elephant conflict in Tikarapara area.

Detailed cluster development plan are to be evolved after completion of Micro Plan in two remaining EDCs. This will focus on both community mobilization and habitat management activities. Initial analysis for Development of Eco-tourism sites is under progress.

Work has also been initiated for development of website to promote eco-tourism (as compared to nature based and other forms of eco-tourism).

An on the job training programme for potential facilitators from Balasore and Parlakhemundi Division was also organized with the assistance from the GC Experts.

In addition to this, process for selection of sites for Natural Heritage, Community and Conservation reserves has also been initiated and final plan is to be prepared in consultation with PCCF Wild Life, Orissa, in accordance with the decision taken at the Governing Body meeting held in March 2009.



Biodiversity management



Nursery Establishment

VSS and Decentralized Nurseries -

Approximately 1167 decentralized VSS nurseries are expected to be established under the project based on availability of land and requirement for planting stocks under JFM mode and requirement of seedling by the people for growing in their lands / field bund etc.

Project has provision of funds for creation of infrastructure facilities for the decentralized nurseries including irrigation well, nursery equipment, fencing, quality seeds to be established and managed by respective VSSs or individuals selected by the VSSs.

During 2007-08, 465 VSS nurseries were established including 107 nurseries where planting stock was produced for 2 or more VSSs . These decentralized VSSs nurseries are maintained for which initial support was provided as seed money from the Project.

Some of these nurseries will be selected for further support to grow seedlings required by people in the neighbouring villages and maintenance will be done through sale of seedlings.

In addition, about 200 such nurseries are to be established in the second batch VSSs and work is continuing in these areas.



Atabia Nursery 2009-10 (non-JFM Tank)
Kaniha Range dt. 06.05.2009



Division wise number of nurseries established/maintained for JFM mode interventions-

Sl. No.	Forest Division	Decentralized VSS Nurseries	Temporary VSS Nurseries	Permanent Departmental Nurseries
1	Angul	23	12	1
2	Bonai	7	20	1
3	Balliguda	1	27	-
4	Deogarh	28	17	1
5	Jeypore	4	45	1
6	Keonjhar	19	25	1
7	Koraput	-	69	1
8	Parlakhemendi	-	27	1
9	Phulbani	19	22	1
10	Rayagada	-	51	1
11	Rourkela	6	43	1
12	Bhadrakh WL	-	-	1



Farm Forestry

Farm Forestry is being promoted to augment multifarious aspects of forestry in the local farm lands & backyard plantation of different horticulture species to supplement the nutrition & income of the community. It has been seen & researched that plantation of certain species of fruit yield trees in farm land increases the growth of farm produce with simultaneously maintaining the moisture content of soil.

Establishment of Farm Forestry Nurseries:

Decentralized nurseries established under "Forest Management" component in JFM Mode are serving to plantation needs under ANR and block plantations for treatment of the Forest area.

Planting stock for horticulture, NTFP, medicinal and vegetable species for sale to public, institutions, farmers or residents in the locality is also being taken up in these nurseries. Project

has planned to develop the established VSS & decentralized nurseries into the farm nurseries as per the efficacy & requirement. Project envisages about 380 such Farm Forestry Nurseries.

VSSs are being encouraged to undertake farm forestry activities with the support of facilitating FMU & NGO team for production of different species & defining the sale price. Revenue from the sales will provide the funds for the planting stock production and sale in the subsequent year. Records would be maintained at the nursery level on production and sale of seedlings.

Provision of Model Farms -

It is proposed to develop Model Farms at different levels to provide technical guidance for maintenance and management of farm nurseries.





Vermi-Compost

Vermi compost provide vital enzymes and amino acids present in the body of the worm as growth promoter & growth regulator for the plants. Simultaneously it helps in reducing the soil toxicity caused due to prolonged use of chemical fertilizers.

Considering the efficacy of vermi compost in promoting the growth of the plants, establishment of vermi compost units were facilitated at divisional as well as VSS level for production and use of vermi compost in place of chemical fertilizers.

Presence of such vermi compost units at VSS level are going to provide consistent support to the project efforts for augmenting nursery setups for plantation purpose. Simultaneously it will help in establishment of farm forestry setup for sustainable revenue through sale of plant species and growth promoting vermi compost to local public and institutions.

Division level vermi compost units will fulfil the initial needs for decentralized nurseries at VSS level and will also serve as demonstration units for establishment of such units in VSS areas. Such units have been established in Angul, Koraput, Jeypore, Rayagada, Rourkela, Bonai divisions. Project is proposing to evolve them into self-sustaining units.





Non-JFM (Teak Plantation / Nursery, Forest roads & boundry for JFM sites)

Artificial Regeneration (Teak)

Teak Plantation has been raised over an area of 625 ha. under Non-JFM Mode component during 2008-09, and post planting operations in these sites were taken up. Target of 7400 ha. was fixed for the year 2009-10 (2009 planting season) and funds were released to the DMUs for pre-planting operations.

Division	2008-09 (Ha)	Target 2009-10 (Ha)
Angul	0	230
Deogarh	35	200
Parlkhemendi	0	60
Phulbani	100	130
Balliguda	0	130
Keonjhar	70	80
Koraput	150	200
Jeypore	150	505
Rayagada	90	735
Rourkela	30	130
Total	625	2400

As a part of capacity building an exposure visit for DMU Chiefs, and DMU Assistant Chiefs to Maharashtra was organized for learning "root trainer nursery techniques".

In addition to raising plantation following current practices, it was decided to adopt root trainer planting techniques through which suitable planting stock for 2009 can be raised even after collection of seeds in January-February (seeding time) and sowing in root trainers.

The slow pace of this component is a matter of concern for which a workshop was held under the chairmanship of



PCCF, Orissa in October, 2008. Necessary measures were taken to accelerate the activities.

It was noticed that the cost norm provided in the Project for this component was lower than the Government approved norms. This aspect has been analyzed in details and the matter was referred to JICA for agreeing to change the cost norm in conformity with Government approved Norms. JICA has communicated their no-objection to this proposal. Accordingly revised cost norms were prescribed.



Teak Nursery, Jeypore



Teak Nursery, Rourkela



Establishment of Hi-Tech Nurseries



Process for establishment of nursery with mist chamber facility was started at Angul and will be functional from the next year. This will be used for production as well as demonstration purposes for trainees at the Forest Rangers College, Angul. The other departmental nurseries in project divisions (Keonjhar, Rayagada, Koraput, Jeypore, Deogarh, Rourkela and Angul) that have been improved from project funds will be utilized for production of seedling of slow growing species which



require one year to attain plantable size. Additional hi-tech nurseries will be established after operationalization of the nursery at Angul.

As a part of adopting improved techniques, project is enabling the divisions to establish nurseries for production of root trainer seedlings. Selected officers and staff have been provided training-exposure, and other required facilitation. It is proposed to produce about 5 lakh RT Seedlings in the 11 forest divisions associated with implementation of the project.



Forest-type Improvement

The component "Forest Type Improvement" aims at improving the standing stock and stand structure as well as augmenting the bio-diversity. The project envisages preparation of a detailed action plan comprising silvicultural operations, along with enrichment planting to increase the biodiversity of the existing high forests for selected Reserve Forest blocks that have sufficient standing stock, and covered by valid working plan. It is proposed to include forest areas where plantations of important species or group of species including, medicinal Plants have been raised and which have potential for improvement with intensive silvicultural operations. A detailed strategy for this activity is being evolved.



Consolidation and Demarcation of Forest Boundaries

Improvement of boundaries of forest blocks was initiated in those forest blocks where sites have been selected for intervention under the project. These works are to be taken up only in such forest blocks that are duly notified under Orissa Forest Act 1972, and there are no boundary disputes. Geo-referencing based on GPS techniques will be done for the boundary pillars conforming to the specifications of the Orissa Forest Department. The surveyed areas will be delineated on the existing forest management maps. The boundaries of the forest blocks are to be cleared (a 5 m wide strip) with cairon pillars installed or maintained at a visible distance along with the boundaries.

Details guidelines were issued in this regard and 96 forest blocks were selected for improvement of boundaries. 1835.42 kms boundary was cleared with construction of 4950 nos. of new RCC pillars and 1292 pillars repaired during the process.

Forest Roads



Considering the improvement of communication road for the VSS, Project provides for construction/ repair of forest roads and link roads. While executing this component, conscious decision has been taken to emphasise upon creation of permanent structures like culverts / causeway / retaining wall/ drains to enhance the life of forest / link roads.

During the year 11.3 kms. of forest roads were constructed and 151.7 kms roads repaired. 22 culverts, 29 causeway, 1 bridge, retaining wall and drains were constructed.

For VSS link roads, 15.6 kms. were constructed and 25.3 kms repaired during the year. In these link roads 20 culverts, 18 causeway and drains were specifically constructed for increasing the longevity specially for saving the roads from damages during rains.



Livelihood Interventions

Livelihood interventions were initiated in the 1st batch areas during the last quarter of 2007-08. Major activities were taken up in this year with impetus on creation of permanent community assets for erecting basic life support system utilizing the funds from EPA. Simultaneously other activities for household support and mainstreaming health care were also started through convergence. Project targetted most of the livelihood requirement of the villagers & in this effort explored available support system & its efficacies. With the livelihood promotion activities SHGs were graded and selected for undertaking different income generation measures and support was provided through the VSS Revolving Fund for starting small business activities.

Livelihood Promotion

Entry Point Activities (EPA) are intended for mobilizing the participating community for effective participation at the initial stage of project implementation and eliciting full participation in the project implementation. Considering the importance of participation of the local community, the Entry Point Activities were initiated on priority basis at the initial stage of preparation of Micro Plans. Proposed EPAs were discussed in the course of Participatory Rural Appraisal by the respective VSSs facilitated by the FMUs and NGO teams. Prioritization of the proposed EPAs was done keeping in view their potential to create assets which may help in income generation while gaining confidence of the people about the project.

Efforts have been made to focus on addressing the concerns related to -

- communication and accessibility through improved link roads.



- drinking water, through establishment of new dug/tube wells and repairing/renovation of non-functional ones,





Annual Activity Report 2008-09
Orissa Forestry Sector Development Project



- sanitation facilities with the construction of bathing enclosures for ladies and drainage system.



- support for household nutrition through backyard farming of different vegetable & fruit species.



- provision of better health services through convergence with NRHM. Health camps were organised in the project areas for vaccination, reproductive child health, de-worming and curing minor diseases.



- household energy solutions with indigenously built fuel efficient smokeless chulha for better health of the housewives.



- livestock development measures are being taken with the vaccination and quality breeds of livestock species.
- providing agricultural equipment.



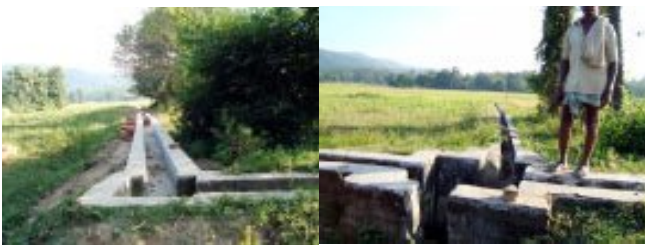


Annual Activity Report 2008-09
Orissa Forestry Sector Development Project

- distribution of good quality seeds for raising in the backyard and vacant space in the VSSs specifically horticulture varieties for nutritional support.



- better irrigation facilities through provisions of water pumps & renovation of defunct irrigation structures.



- weighing balance in all VSSs



- multi-purpose water harvesting structures and renovation of ponds along with pisciculture



- transistors for listening to AIR programme on agriculture/horticulture/forestry.

- provision of spot lights for crop protection from elephants.



After the completion of 2nd batch Micro-Planning, along with the forestry interventions, Community Development works including construction of VSS office-cum-meeting halls, EPA activities and ranking of SHGs for taking up IGA in 2nd Batch VSS were started.



Income Generation Activities

Pilot IGAs-

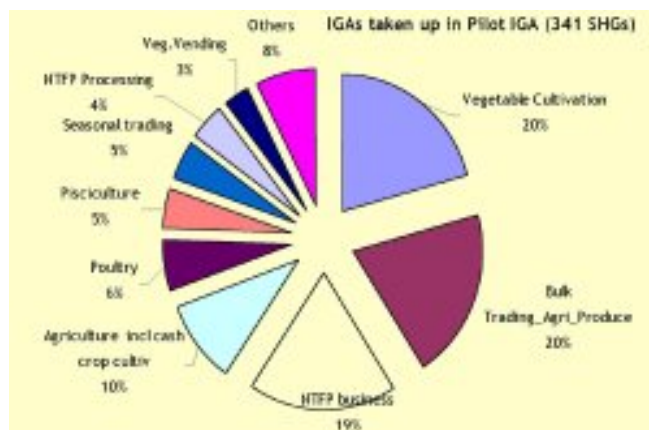


On the income generation front project have provision for support through VSS revolving fund to the local SHGs.

Pilot IGAs were facilitated with a view to understand the people preferences and capabilities. Within a year 341 SHGs have been linked with various income generation activities with the support from VSS revolving fund. The amount of loan availed by the 341 SHGs is Rs. 4.6 million.

From pilot IGAs it was learnt that SHGs prefer activities related to vegetable cultivation, bulk trading in agricultural produces, NTFP, Agriculture including cash crop cultivation. Most of the SHGs have earned profits, and more than that they have gained confidence for upscaling and starting other activities.

Livelihood Opportunity Analysis -



Livelihood Opportunity Analysis was conducted by MART through in-depth study in sample VSSs covering all the 14 DMUs; different stakeholders - traders, entrepreneurs; state/national markets for potential forest-non forest resource based commodities, and two Multi Stakeholder Workshops at Bhubaneswar.

MART has submitted draft report to PMU, listing 20 focused commodities, their business plans, and tentative facilitative project support for augmenting a robust IGA structure around these commodities. Report is under scrutiny. An action plan for grounding focused IGAs is being evolved by the PMU with the assistance of GC Experts.





Monitoring & Evaluation

Project monitoring at various level is being done by the respective heads of the units and reports as per the defined norms were being received at PMU level for compilation and analysis. Though project MIS is in developing stage, its related proformas were sent to the field for appraisal and project is conducting trainings for understanding the MIS terminology & process for filling the respective MIS forms. Besides the project laid monitoring process various steps taken during the year for better monitoring & evaluation were -

Completion of Baseline Survey - Household Level Socio-economic Baseline Survey has been completed by the Contracted firm - NABCONS in 207 sample VSSs from 1st and 2nd batch VSSs, and 11 control villages. Draft report submitted by NABCONS is under scrutiny.

Independent Third Party Verification of the created assets: PMU has initiated the process of annual independent 3rd party verification of the assets created under the project for greater transparency and accountability. Two organizations namely SORFO and i-Concepts were selected for asset verification with a well defined terms of reference. The firms started the verification during March 2009.



Field Visits by Sri S.P. Nanda, IAS, APC-cum-ACS, Vice President of OFSDS and Chairman of Governing Body:

Sri S.P. Nanda, IAS, Cairman of Governing Body also visited project area in Deogarh division and interacted with project officials and community. He also visited forest treatment area and gave his valued suggestions to project officials. He expressed satisfaction on the progress.



S.P.Nanda, IAS, APC-cum-ACS and Vice-President of OFSDS in a project village, Deogarh Division.



Field Visits by PMU Officials: Regular field visits are being conducted by Project Director and PMU officials for monitoring the progress and assisting grassroots officials in various implementation processes.



JICA Mission's visit to project -



2-member JICA review mission comprising Mr. Vineet Sarin, Lead Development Specialist and Miss Nami Sinohara visited the project from 3rd to 6th December, 2008. Review Mission visited - VSSs in Angul, Deogarh and Keonjhar DMUs, where apart from seeing plantation interventions and assets created under EPA, mission member also scrutinized the accounts and other VSS documents. They also reviewed the project activities with Project Director and other officers of the project. They rated the project implementation status as 'Good'.



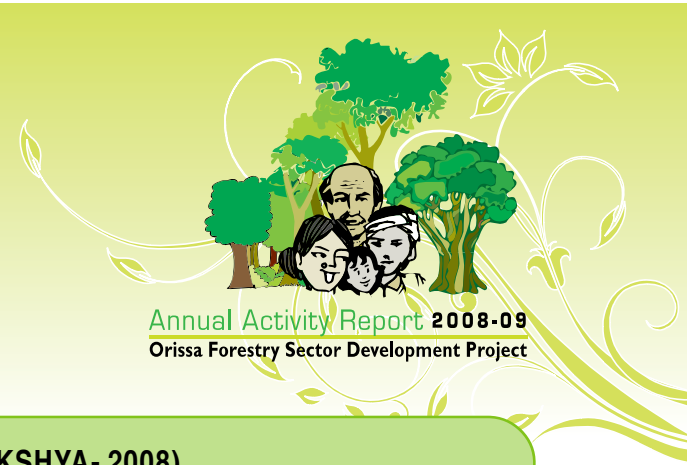
Visit of Survey Mission of JBIC



A JBIC Survey Mission visited project from 19th to 23rd May, 2008 to carry out "Field Survey of the implementation Status of the Guidelines for confirmation of Environmental and Social Considerations" through interviews with related parties i.e., Govt. of India, Executing Agencies, Project affected people and local NGOs. The Survey Mission comprised Mr. Juichiro Sahara, Deputy Director, Environmental Analysis Department, Ms. Tomoko Tauchi, Environmental Analysis Department and Ms. Kinuko Mitani, Country Officer, JBIC, New Delhi. They visited VSSs in Phulbani and Angul Divisions and also interacted

with Project Director and other PMU Officials. Mission expressed satisfaction regarding the progress of the project.

A 'Follow up Mission' comprising Mr. M. Karasawa, Director, Development Assistance Department, JBIC-Tokyo and Mr. Vineet Sarin, Lead Regional Specialist, JBIC, New Delhi, visited OFSDP from 14th to 15th June, 2008. They visited VSSs in Angul Division, interacted with Project Director and PMU Officials. They expressed their happiness on the villagers' active participation in the project activities.



Annual Review Meeting (SAMEEKSHYA- 2008)



Project organised 1st State Level Annual Review Meeting on 28th and 29th Jan 2009 at Bhubaneswar. Meeting was attended by 22 Animators, 20 Forest Rangers, 18 VSS Presidents, 21 NGO Team leaders and 19 VFWs. In total 134 project personnel from various DMUs attended the meeting apart from Officers from PMU, concerned Conservator of Forests & DMU Chiefs.

The major objectives were to review progress, sharing views amongst PMUs-DMUs- FMUs-VSSs & supporting NGOs and identifying technical, social and managerial issues with remedial measures for smooth implementation of different interventions.

Mr.S.P. Nanda, IAS, Agriculture Production Commissioner, Orissa & Chairperson OFSDP Governing Body addressed the gathering. He suggested to work out convergence prospects and emphasized on rural health, deworming of children to reduce the malnutrition & eye-testing for children below 15 yrs of age. He also stressed on Pisciculture and Poultry activities for enhancing income of the VSS members.

Sameekshya provided a platform for getting feedback and views of the main stakeholders the VSSs and the frontline facilitators for process improvement / refinement.





IEC during the year....



Major IEC activities taken during the year -

Guidelines -

- Operational Guidelines for Entry Point Activity (EPA) was prepared with the objective of developing a clear understanding about the purposes and the processes involved in deciding the EPAs and their execution, as also the documentation and maintenance of the assets so created. EPA Guidelines printed in English & Oriya.
- VSS Gathan 'O' Parichalna - Oriya version of VSS Management Manual was printing for better understanding of grassroots stakeholders.



- Micro-Plan Format in Oriya
- JFM Resolution - 2008

Educative -

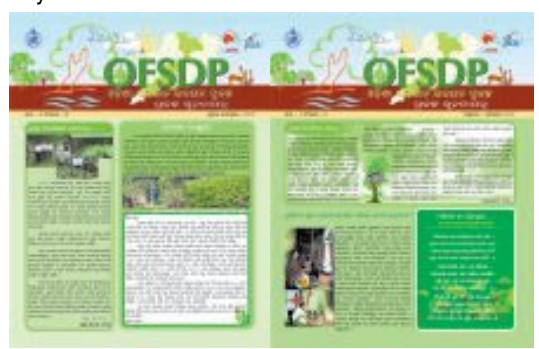
- Posters
 - Ama Jangala Parichalna
 - Jangala Ama Pain Ama Dwara
 - Vana Sarankhyana Samiti (Oriya)
 - Swayang Sahayaka Gosthira Saphalata Suchaka
 - Vana Sarankhyana Samiti Sabhinka Dayitwa
 - Bhala Vana Sarankhyana Samiti Kahaku Kahiba





● **Project Information & Awareness**

- Four issues of Quarterly Newsletter in Oriya & English were published and circulated during the year.



- Trailing the greens -Leaflet on Eco-Tourism



- The First "Project at a Glance" (pictorial) documenting various activities under the project was released during the National Cross Learning Workshop held in February 2009.

- Process documentation on conducted trainings and workshops.



Informative Posters prepared during National Cross Learning Workshop.

S.P.Nanda, IAS, APC-cum-ACS, Vice-President of OFSDS and Chairman of Governing Body releasing project posters during Governing Body Meeting, at the Secretariat, Bhubaneswar.





Way forward ... Planning for 2009-10

Activities planned/proposed to be taken up during the year 2009-10 are briefed according to the main items of work i.e. Restoration of Degraded Forest, Coastal Plantation, Bio diversity Management, Community/Tribal Development, and supporting activities. Actual extent of area coverage under various components will be evolved from the VSS/FMU level following bottom up approach.

JFM Mode Interventions -

Restoration of Degraded Forests

Maintenance works in the first batch JFM sites will be taken up, in addition to implementation of Micro Plans in the second batch JFM sites, and preliminary works in the third batch of VSSs along with selection of additional sites to reach the project target.

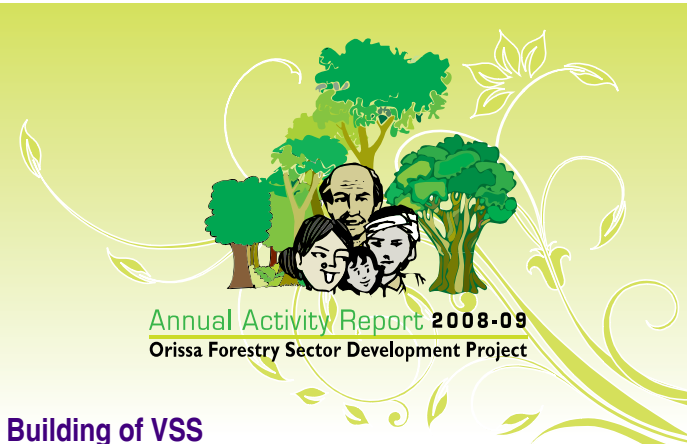
- VSS/Decentralized Nurseries - About 200 such nurseries are to be established in the second batch VSSs.
- Soil and Moisture Conservation Measures: Balance area of the first batch JFM sites, and the 652 second batch JFM sites with an estimated area of 64573.5 ha., will be covered
- Assisted natural regeneration (ANR): Of the gross treatment area in the second batch of JFM sites, an estimated area of 43791 ha. is planned for treatment under ANR, and 5000 ha. Block Plantation.
- 1st Batch Micro-plans are to be revisited for identification of Additional areas for block plantation..
- Fire protection: VSS members will protect their assigned forest areas. In vulnerable areas fire lines shall be laid

around plantation areas. "No-fire" incentive will also be provided to the VSSs in case there is no incidence of fire in their area.

Forest Management in Non-JFM Mode

Major works under this component to be conducted during 2009-10 are -

- Consolidation and Demarcation of Forest Boundaries: on priority basis in those forest blocks where sites have been selected for treatment in JFM mode.
- Construction of new forest roads/ link roads and improvement of existing forest roads will be implemented based on the necessity in the project area.
- Construction and Improvement of Permanent Nursery: During the year the Nursery with mist chamber facility established at Angul during last year (2008-09) will be made fully operational. Additional permanent nurseries will be established and existing ones improved after analyzing the requirement of plantation stock in the Project Division.
- Artificial Regeneration: Plantations raised over 625 ha. during 2008-09 will be maintained and a total of 2400 ha is scheduled for plantation during the monsoons. Identification of Additional areas is to be expedited.



Farm Forestry Development

This year will be the full-scale commencement of the farm forestry development component. 380 Farm Forestry Nurseries will be selected out of the VSS/Decentralized Nurseries established under the Project. Model Farms will be developed by DMUs, NGOs and willing Farmers/VSSs for demonstration and dissemination of knowledge on various species and saling propositions in the adjoining areas.

Coastal Plantations

Mangrove Plantations

Micro Plans will be prepared for the all remaining villages located around the mangrove restoration area for starting the implementation. Both physical and social fencing shall be provided to protect mangrove forest from the pressure by the local people and cattle. The social fencing by the communities (VSSs) concerned will be prioritized, together with live fence introduction.

Casuarina Plantations

Plantations raised during 2008-09 shall be maintained. Casuarina (shelter belt) plantations during this year will be taken up after the approval of the scheme for harvesting and replanting of old mature casuarina plantation by the Government.

Biodiversity Management

Formation/revival of EDCs and micro planning in all the clusters in Satkosia WL division will be completed. Cluster development plans will be evolved with possible avenues of eco-tourism developments. For Bio-diversity conservation, including elephant corridors and mitigating man-animal conflict a framework is being evolved.

Solar power fencing is planned to mitigate man-elephant conflict as required. Process for selection of sites for Natural Heritage, Community and Conservation reserves will be completed in consultation with PCCF Wild Life, Orissa, in accordance with the decision taken at the Governing Body meeting held in March 2009.

Eco-Development Plan for areas in the other two sanctuaries, namely Lakheri Valley and Kotagarh respectively in Parlakhemendi and Balliguda Forest Divisions will also be prepared with the assistance from the GC experts for starting implementation.

Capacity Building of VSS

- Revitalisation of VSSs through extensive capacity building measures as per requirement.
- Capacity building measures for 3rd batch VSSs for preparing of Micro Plans.
- Specialized Need Based training for SHG/CIG as well as empowering them from OFSDP livelihoods perspectives.
- VSS representative meetings on the line of 'Sameekshya' will be started at DMU level.
- Exposure / Exchange visits- within the divisions and to other areas for community empowerment and enhancing livelihood options.
- Besides VSS Capacity Building measures, training for the officials will be conducted as per the defined training calendar on various interventional needs.

Community/Tribal Development

- Improvement of VSS Facility and Equipment - for gradually making the VSS as Village Resource Centre (VRC).
- Entry Point Activities (EPA) in respect of first and second batch VSS will be completed with continuation in 3rd batch VSSs for fulfilling various developmental and livelihood needs of the community. DMU shall prepare a complete data base of the assets created under the EPA.
- Support for Income Generating Activities
 - > Pilot IGAs will continue.
 - > Focussed IGAs will be planned after finalizing various options being drawn out from the available convergence options and logistical support structure. Besides this project will also finalise the "Livelihood Opportunity Analysis" for understanding the value chain of different rural products.

Strengthening of Executing Body

- a) Facility/Equipment Improvement:** Additional equipment will be procured for establishing the computerized management / monitoring system at PMU including a basic GIS cell at the DMUs.
- b) Capacity Development -** Complete need based training programmes, both national and overseas, will be formulated with a view to enhance the professional capacity

of the project implementing officers in more effective and efficient implementation of various project components.

Forest Research

Research works in the following fields are proposed to be covered in the Project:

- Biodiversity and Wildlife Study
- Tree Improvement and Silvicultural Research
- Socio-Economic Research on Livelihood and IGA interventions.

Monitoring and Evaluation

a. Quarterly meetings with the CFs/DMU Chiefs for review of the project works and identifying action for improvement in the implementation status.

b. Establishment of Database

A comprehensive database would be established and strengthened for the project for monitoring and evaluation with regard to physical progress and impact assessment. Following activities are scheduled to be conducted under establishment of database.

Baseline Survey: Finalization of Report and database related to first phase household level socio-economic survey conducted in 218 villages (207 Project villages and 11 target villages) by NABCONS. In addition, Second phase survey involving 182 villages (173 Project villages and 9 Target villages) will be conducted.

Collection of Secondary data: Data collected through PRA during micro planning would be systematically organized and compiled in a database form that can be linked to GIS database too. GIS data from secondary sources would be collected, organized and integrated with the existing GIS database of the project.

GIS Database Development: Systematic cataloguing of GIS Database and hard copy maps of Batch-1 and Batch-2 villages supplied by the GIS firms for easy retrieval. GIS database would be developed through GPS based survey and mapping for third Batch villages.

Establishment of GIS-MIS linkage: Linkage would be established between GIS and MIS database for displaying and analyzing location specific and comparative progress of activities. The information collected through MIS would be depicted and displayed in thematic form using GIS capabilities for effective management and planning of project activities.

c. Management Information System

VSS Level MIS: VSS level MIS involving hard copy formats (covering sub-components under Restoration of Degraded Forest that includes ANR & Block Plantation, SMC, Nursery, Fire Line) for recording and reporting the financial as well as physical progress of activities will be implemented.

FMU/DMU/PMU Level MIS: Spreadsheet based semi-automatic MIS will be designed, tested and implemented in a phased manner (for FMU/DMU/PMU level) for timely flow of information, received from VSS and getting generated at each level. The quarterly reports will flow from FMU to DMU to PMU at a pre-defined time gap.

MIS Training: Capacity development with respect to paper based MIS as well as spread sheet based MIS for various project officials at different implementation levels.

d. Progress Monitoring and Evaluation

For regular process monitoring and periodical evaluation "Monitoring and Evaluation Guidelines" will be finalized.





Statement of Accounts

PATRO & CO.
Chartered Accountants

3rd FLOOR, JANPATH TOWER
ASHOK NAGAR, BHUBANESWAR - 751 009
TEL. : 0674 - 2532471, 2532472, 2532473
Fax : 0674 - 2531472
E-mail : patroco@rediffmail.com
patroco@gmail.com
web : <http://www.patroandco.com>

Form-SoE

Date : 28/10/2009.

To

The Project Director,
Orissa Forestry Sector Development Project,
Bhubaneswar
(ID P 173)

We have verified the accompanying Statement of Expenditures (SoEs) of Orissa Forestry Sector Development Project financed under Loan Agreement No. ID-P173 for the year 2008-09. The SoEs are the responsibility of Orissa Forestry Sector Development Project's Management. Our responsibility is to express an opinion on the SoEs based on our verification.

We conducted our verification in accordance with the National Accounting Standards . We perform the verification to obtain reasonable assurance about whether the SoEs are free of material misstatement. This includes verifying the SoEs, with the accounting records and supporting documentation. We believe this provides a reasonable basis for our opinion.



To the best of our information and according to the explanations given to us, in our opinion, the said SoEs give a true and correct picture of the expenditure incurred during the previous year 2008-09.

for PATRO & CO.,
Chartered Accountants



(Rajendra Patro)
Partner
M.No. 019423



INTERNAL AUDITORS



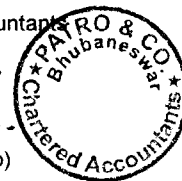
**ORISSA FORESTRY SECTOR DEVELOPMENT SOCIETY
SFTRI CAMPUS, GHATIKIA, BHUBANESWAR
CONSOLIDATED BALANCE SHEET AS ON 31.03.2009**

LIABILITIES	AMOUNT (Rs.)	ASSETS	AMOUNT (Rs.)
<u>CORPUS FUND</u>		<u>FIXED ASSETS</u>	
Opening Balance	63,389,371	As per Schedule - D	51,782,933
Add: Grant utilised for Fixed Assets	2,392,486		
Less: Amount Equivalent to Depreciation	<u>8,584,119</u>		
	57,197,738	<u>CURRENT ASSETS</u>	
		Loans and advances (As per Schedule - E)	24,237,026
<u>CURRENT LIABILITIES & PROVISIONS</u>		<u>CASH & BANK BALANCE</u>	
Unspent grant (As per schedule - A)	655,431,585	Fixed deposit	48,018,367
Revolving fund	133,363	Bank Balance	606,183,592
Current liabilities (As per schedule - B)	6,025,248	Cash Balance	<u>15,677</u>
Other liabilities (As per schedule - C)	11,449,662		654,217,636
TOTAL	<u>730,237,595</u>		<u>730,237,595</u>

As per books of accounts / records produced to us, the above statement are compiled by us.

for PATRO & CO.,
Chartered Accountants

(Signature)
(Rajendra Patro)
Partner
M.No. 019423



Place : Bhubaneswar,
Date : 28/10/2009

Annual Activity Report 2008-09
Orissa Forestry Sector Development Project



ORISSA FORESTRY SECTOR DEVELOPMENT SOCIETY
SFTRI CAMPUS, GHATIKIA, BHUBANESWAR
CONSOLIDATED INCOME AND EXPENDITURE ACCOUNT FOR THE PERIOD FROM 1ST APRIL '08 TO 31ST MARCH '09

EXPENDITURE	AMOUNT (Rs.)	INCOME	AMOUNT (Rs.)
BY ADMINISTRATIVE EXPENSES		BY GRANT IN AID	
Office Expenses	2,734,175.34	Opening Unspent	378,815,744.75
Salary of DEO	7,435,402.62	Add: Receipt during the period	1,097,386,507.00
Travelling Expenses	1,649,764.00		1,476,202,251.75
MV- POL	5,023,849.24	Less: Grant utilised for purchase of Fixed Assets	2,392,486.00
	16,843,191.20	Less: Unspent Grant	655,431,585.40
Publicity & Communication			818,378,180.35
Field level publicity unit	121,436.00	Amount Refunded by VSS	49,911.00
Facility/Equipment Improvement		Amount equivalent to depreciation	8,584,119.23
Wireless telecommunication	577,840.00	Interest on FD	9,031,863.00
FMU Building	320.00	Interest on Savings	1,526,979.00
Survey equipments and instruments	656,684.00	Bank Interest	1,444,447.40
Mangrove species plantation		Sale of application Form	18,000.00
Plantation establishment	4,856,722.00	Tender Money (Baseline survey)	16,000.00
Casualty replacement nursery	47,838.00	Misc. Income	164,295.00
Land preparation	5,583,302.00		
Non mangrove species plantation			
Regeneration operation	10,150.00		
Casualty replacement nursery	3,888.00		
Plantation establishment	796,715.00		
Capacity development			
Training for DMU staff	1,711,543.00		
Training for FMU staff	2,492,426.00		
Forest Management under Non-JFM Mode			
Construction and improvement of nurs	2,415,240.00		
Maintenance of forest boundary	1,243,727.00		
Assisted natural regeneration	271,039,040.00		
Consolidation and demarcation of fore	1,479,875.00		
Establishment of Decentralized Nurse	639,914.00		
Artificial regeneration	18,872,655.00		295,690,451.00
Capacity building of VSS			
Improvement of VSS facility and equip	63,721,827.00		
VSS management development guide	403,210.00		
Preparation of micro plan	4,224,818.00		
VSS representative meeting	133,297.00		
Exposure trip	582,485.00		
Community organization	1,182,448.00		
VSS Audit Expenses	247,253.00		
DMU & FMU Computers	9,000.00		
VSS facility and equipments	6,705,400.00		77,209,738.00
Community / Tribal development			
Technical support	19,463,245.00		
Organisational support	9,622,613.00		
Promotion of Fuel wood saving device	119,349.00		
Rotating Fund	46,603,556.00		
IGA	9,050,000.00		
Capacity building of VSS	38,000.00		
Fire Protection	66,323.00		
Training of SHG	7,350.00		
TDS Payable	24,720.00		
Training coaching and information dis	2,881,273.50		87,876,429.50
Restoration of degraded forest			
Soil moisture conservation	33,075,015.00		
Economic plantation	20,119,759.00		
Fuel and fodder plantation	20,933,826.00		
Bamboo/Cane plantation	3,343,830.00		
NTFP Plantation	28,770,243.00		
Fire Line Construction	50,370.00		
Rehabilitation of degraded forest	1,937,939.00		108,230,982.00
JFM site selection			
Web Site Development	4,471.00		
Demarcation of JFM area	6,042,561.00		6,047,032.00
Mitigating Man Animal Conflict			
Habitat Management			186,678.00
Livelihood Improvement			
Medical/Health Carecamp			1,824,399.00





Annual Activity Report 2008-09
Orissa Forestry Sector Development Project

Renovation of DMU/FMU Office Building		
Renovator of DMU Office Building	58,243.00	
Renovation of FMU Office Building	629,305.00	687,548.00
DMU Office equipment & furniture		60,668.00
Infrastructure developments		
Improvement and rehabilitation of fore	6,953,892.00	
Maintenance of forest road	196,440.00	
Link road(Plan & Design)	142,570.00	
Link road(Improvement& rehabilitation	172,286.00	
Forest road(Plan & Design)	265,185.00	
New construction Forest road	535,751.62	
Construction of new road with related	251,000.00	
New construction Link road	2,239,645.00	10,756,769.62
Entry point activity		20,034,357.00
Plantation establishment		-
Paid to mind mart		-
VSS Expenses		100,000.00
TDS deposited		-
P. tax deposited		-
GPF/AISPF/AIGIS		-
HRA		-
Interest HBA		-
Renovation of Building		109,176.00
Market res arch		1,322,948.00
Salary		4,532,288.00
Consultancy fees		30,589,239.00
Consultancy expenses(foreign)		35,686,271.00
Service tax		11,347,989.00
Entry Tax		10,172.00
VAT		731,302.43
Advertisement		-
Public Awareness		201,300.00
Publicity & Communication		385,714.00
Survey of JFM area		48,678,492.00
Administration exp.		4,848,572.00
Publication		209,770.00
Procurement of Land Use Map		1,500.00
Solar power fencing		1,360,000.00
Improvement of VSS facility and equipments		106,000.00
EPAs		41,314,636.00
Auditing of PMU Accounts		4,000.00
Annual Review Seminar		799,580.00
SIVI Cultural Resources		357,200.00
Bank Charges		169,812.00
Training for PMU Staff		12,026.00
Computer ed management System		2,490.00
Advance given by DMU for Training,Coaching.		-
Empowerment of VSS		7,000.00
Baseline Survey		6,000.00
Suspense		-
Provision for the month of March		5,429,091.00
Depreciation		8,584,119.23
		839,213,794.98
		839,213,794.98

As per books of accounts / records produced to us, the above statement are compiled by us.

for PATRO & CO.,
Chartered Accountants

(Rajendra Patro) c.
Partner
M.No. 019423



Place : Bhubaneswar,
Date : 28/10/2009

Annual Activity Report 2008-09
Orissa Forestry Sector Development Project

ORISSA FORESTRY SECTOR DEVELOPMENT SOCIETY
SFTRI CAMPUS, GHATIKIA, BHUBANESWAR
RECEIPT & PAYMENT ACCOUNT FOR THE PERIOD FROM 1ST APRIL '08 TO 31ST MARCH'09

RECEIPT	AMOUNT (Rs.)	PAYMENT	AMOUNT (Rs.)
TO OPENING BALANCE		BY ADMINISTRATIVE EXPENSES	
Bank Balance	257,717,686.89	Office Expenses	825,917.45
Cash Balance	198,918.45	Salary of DEO	4,620,512.61
Grant Received from Govt.	1,061,238,000.00	Travelling Expenses	1,049,598.00
Interest on FD	9,345,660.40	MV- POL	1,800,597.00
Interest on savings	1,371,345.00		8,296,625.06
FAR	3,899,072.00		
Bank Interest	1,330,372.00	Publicity & Communication	
Sale of application form	18,000.00	Field level publicity unit	126,035.00
Sale Proceeds of Seeding	135,492.50	Facility/Equipment Improvement	
Refund of travelling advance	12,914.00	Wireless telecommunication	506,973.00
Tender money (Baseline survey)	16,000.00	Survey equipments and instruments	676,181.00
FD Maturity	761,011,000.00	Mangrove species plantation	
Amount Received From Mind Mart	9,601.00	Plantation establishment	718,696.00
Misc. Income	107,812.00	Land preparation	718,696.00
Cash recovered from VFW	380.00	Non mangrove species plantation	
Amount Refunded from VSS	49,911.00	Regeneration operation	
Amount Received from Staff	180.00	Plantation establishment	
		Capacity development	
		Training for DMU staff	1,179,259.00
		Training for FMU staff	126,875.00
		Forest Management under Non-JFM Mode	1,306,134.00
		Construction and improvement of nursery	200,222.00
		Maintenance of forest boundary	66,837.00
		Assisted natural regeneration	30,061,871.00
		Consolidation and demarcation of forest bound	105,485.00
		Artificial regeneration	3,491,391.00
		Capacity building of VSS	33,925,806.00
		Improvement of VSS facility and equipments	9,608,891.00
		VSS management development guideline	51,100.00
		Preparation of micro plan	484,679.00
		VSS representative meeting	9,000.00
		Exposure trip	153,550.00
		Community organization	82,700.00
		VSS Audit Expenses	249,037.00
		VSS Office cum Meeting Hall	10,552,000.00
		VSS Building	5,589,000.00
		DMU & FMU Computers	9,000.00
		VSS facility and equipments	11,827,575.00
		Community / Tribal development	38,595,532.00
		Technical support	18,024,381.00
		Organisational support	1,646,370.00
		LCD Projector Screen	7,500.00
		Promotion of Fuel wood saving devices	119,349.00
		Rovling Fund	3,033,556.00
		IGA	5,800,000.00
		Training of SHG	7,350.00
		Training coaching and information dissemination	178,365.00
		Restoration of degraded forest	28,816,871.00
		Soil moisture conservation	802,112.00
		Economic plantation	2,337,310.00
		Fuel and fodder plantation	2,402,075.00
		Bamboo/Cane plantation	686,263.00
		NTPF Plantation	7,290,464.00
		Establishment of decentralised nursery	988,000.00
		JFM site selection	14,506,224.00
		Demarcation of JFM area	14,826,372.00
		Livelihood Improvement	
		Medical/Health Carecamp	307,808.00
		Infrastructure developments	
		Improvement and rehabilitation of forest road	681,499.00
		Link road(Plan & Design)	56,000.00
		Link road(Improvement)	23,700.00
		Forest road(Plan & Design)	32,500.00
		New construction Link road	75,000.00
			868,699.00
		Mobility Improvement	
		DMU Office Equipment & Furniture	64,196.00
		Entry point activity	29,735,265.00
		Plantation establishment	313,950.00
		Paid to mind mart	35,921.00
		VSS Expenses	126,000.00





Annual Activity Report 2008-09
Orissa Forestry Sector Development Project

TDS deposited	15,437,120.00
P.tax deposited	15,520.00
GPF/AISPF/AIGIS	855,188.00
HRA	13,052.00
Interest HBA	25,500.00
Renovation of Building	106,702.00

Payment of Outstanding Liabilities	
Salary	235,515.00
Administration exp	204,179.00
Publicity & Communication	26,199.00
Advertisement	70,230.00
Market research	536,123.00
Salary	1,169,228.00
Consultancy fees	3,040,025.00
Service tax	20,254,698.00
Entry Tax	11,749,635.00
VAT	10,172.00
Public Awareness	1,164.00
Publicity & Communication	197,156.00
Office equipment	369,888.00
PMU Vehicle	612,928.00
Travel advance	1,743,174.00
Survey of JFM area	50,800.00
Administration exp.	14,808,811.00
Advance to DMU.	4,617,751.00
Advance to FMU	(4,110,000.00)
Amount release to VSS	83,209,541.00
Advance to Consultant	451,368,922.00
Advance to Staff	1,449,755.00
Publication	120,000.00
Procurement of Land Use Map	205,135.00
Advance to Mapping Firm	1,500.00
Auditing of PMU Accounts	2,997,046.00
Annual Review Seminar	133,018.00
SIVI Cultural Resources	799,209.00
Bank Charges	357,200.00
Purchase of Computer	166,626.00
Training for PMU Staff	50,680.00
Computerised management System	12,026.00
Advance given by DMU for Training, Coaching	2,490.00
Empowerment of VSS	45,750.00
Baseline Survey	7,000.00
Fixed deposit	6,000.00
Renewal of Fixed deposit	699,012,000.00
BY CLOSING BALANCE	
Bank Balance	5,061,455.00
Cash Balance	704,073,455.00
	606,183,592.18
	15,677.00
	606,199,269.18

Total :	2,096,462,345.24	2,096,462,345.24
----------------	-------------------------	-------------------------

As per books of accounts / records produced to us, the above statement are compiled by us.

for PATRO & CO .
Chartered Accountants

(Rajendra Patro)
Partner
M.No. 019423

Place : Bhubaneswar,
Date : 28/10/2009



Project Management Unit

Name	Designation	Period	
		From	To
Sri A.K. Bansal	Project Director	01.04.2008	31.03.2009
Dr. J.P.Singh	Joint Project Director	08.07.2008	31.03.2009
Sri B.K.Swain	Joint Project Director	01.04.2008	31.08.2008
Sri D.Biswal	Joint Project Director	01.04.2008	31.03.2009
Sri A.C.Dinakar	Deputy Project Director	01.04.2008	31.03.2009
Sri R.N.Sahoo	Deputy Project Director	01.04.2008	31.03.2009
Sri M.R.Bhatta	Deputy Project Director	12.05.2008	31.03.2009
Sri P.K.Jena	Asst. Conservator of Forests	24.06.2008	24.10.2008

Conservator of Forests

Circle	Officer	Period	
		From	To
Angul	Sri S.K.Popli	01.04.2008	31.03.2009
Baripada	Sri R.N.Reddy	01.04.2008	31.03.2009
Berhampur	Dr.Debabrata Swain	01.04.2008	31.03.2009
Koraput	Sri Abhaya Kanta Pathak	01.04.2008	31.05.2008
	Sri S.P.Mohapatra	31.05.2008	31.03.2009
Rourkela	Sri Jitendra Kumar	01.04.2008	03.04.2008
	Sri Ajay Riazeda	02.04.2008	31.03.2009

Heads of Divisional Management Units

	DMU Chief	Name	Period	
			From	To
1.	Angul	Sri Sudhansu Sekhar Mishra	01.04.2008	31.03.2009
2.	Bonai	Sri Pravakar Sethy	01.04.2008	31.03.2009
3.	Keonjhar	Dr.Pradeep Raj Karat	01.04.2008	31.03.2009
4.	Deogarh	Sri S.C.Mohanty	01.04.2008	07.05.2008
		Sri Bhimsen Maharana	07.05.2008	31.03.2009
5.	Rourkela	Dr. K.Murugesan	01.04.2008	31.03.2009
6.	Balliguda	Sri Ramesh Chandra Sethy	01.04.2008	31.03.2009
		Sri Nimain Charan Mohanty	01.04.2008	28.02.2009
		Sri Ramesh Chandra Sethy	01.03.2009	06.03.2009
7.	Phulbani	Sri M.Yogajayananda	06.03.2009	31.03.2009
		Sri M.R.Bhatta	01.04.2008	03.05.2008
		Sri R.C.Sethi	03.05.2008	25.05.2008
8.	Paralakhemundi	Sri Jita Satru Mohanty	25.05.2008	31.03.2009
		Sri Rashmi Ranjan Nayak	01.04.2008	31.03.2009
9.	Jeypur	Sri Rashmi Ranjan Nayak	01.04.2008	31.03.2009
10.	Koraput	Sri Atish Kumar Behera	01.04.2008	31.03.2009
11.	Raygada	Sri Akshya Kumar Patra	01.04.2008	30.06.2008
		Sri B.K.Acharya	04.07.2008	31.03.2009
12.	Bhadrakh WL	Sri Prafulla Kumar Mishra	01.04.2008	31.03.2009
13.	Balesore WL.	Sri Amitav Brahma	01.04.2008	31.03.2009
14.	Satkosia WL	Sri Sudhansu Sekhar Mishra	01.04.2008	07.05.2008
		Sri R.Raghu Prasad	07.05.2008	31.03.2009

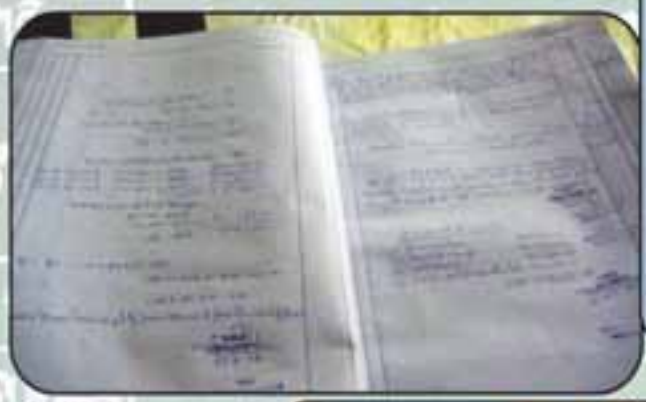
ଓଡ଼ିଶା ବିନାୟକ ଭବନ ପ୍ରକଳ୍ପ (ଓ.ପି.ପି.ପି.)

ସ୍ଵଚ୍ଛତା ପଞ୍ଜିକା

ନାମ - ଗାମେଶ୍ଵରୀ ବିହାରୀଶିଖା
 ରାଧାନାଳ ବି

VSS Documents

Sl. No.	Date	Particulars	Debit	Credit	Balance
1	01-12-2017	Opening Balance			100.00
2	02-12-2017	Deposit		50.00	150.00
3	03-12-2017	Withdrawal	20.00		130.00
4	04-12-2017	Deposit		30.00	160.00
5	05-12-2017	Withdrawal	10.00		150.00
6	06-12-2017	Deposit		40.00	190.00
7	07-12-2017	Withdrawal	15.00		175.00
8	08-12-2017	Deposit		25.00	200.00
9	09-12-2017	Withdrawal	8.00		192.00
10	10-12-2017	Deposit		35.00	227.00
11	11-12-2017	Withdrawal	12.00		215.00
12	12-12-2017	Deposit		45.00	260.00
13	13-12-2017	Withdrawal	18.00		242.00
14	14-12-2017	Deposit		55.00	297.00
15	15-12-2017	Withdrawal	22.00		275.00
16	16-12-2017	Deposit		65.00	340.00
17	17-12-2017	Withdrawal	28.00		312.00
18	18-12-2017	Deposit		75.00	387.00
19	19-12-2017	Withdrawal	32.00		355.00
20	20-12-2017	Deposit		85.00	440.00
21	21-12-2017	Withdrawal	38.00		402.00
22	22-12-2017	Deposit		95.00	497.00
23	23-12-2017	Withdrawal	42.00		455.00
24	24-12-2017	Deposit		105.00	560.00
25	25-12-2017	Withdrawal	48.00		512.00
26	26-12-2017	Deposit		115.00	627.00
27	27-12-2017	Withdrawal	52.00		575.00
28	28-12-2017	Deposit		125.00	700.00
29	29-12-2017	Withdrawal	58.00		642.00
30	30-12-2017	Deposit		135.00	777.00
31	31-12-2017	Withdrawal	62.00		715.00



Sl. No.	Date	Particulars	Debit	Credit	Balance
1	01-12-2017	Opening Balance			100.00
2	02-12-2017	Deposit		50.00	150.00
3	03-12-2017	Withdrawal	20.00		130.00
4	04-12-2017	Deposit		30.00	160.00
5	05-12-2017	Withdrawal	10.00		150.00
6	06-12-2017	Deposit		40.00	190.00
7	07-12-2017	Withdrawal	15.00		175.00
8	08-12-2017	Deposit		25.00	200.00
9	09-12-2017	Withdrawal	8.00		192.00
10	10-12-2017	Deposit		35.00	227.00
11	11-12-2017	Withdrawal	12.00		215.00
12	12-12-2017	Deposit		45.00	260.00
13	13-12-2017	Withdrawal	18.00		242.00
14	14-12-2017	Deposit		55.00	297.00
15	15-12-2017	Withdrawal	22.00		275.00
16	16-12-2017	Deposit		65.00	340.00
17	17-12-2017	Withdrawal	28.00		312.00
18	18-12-2017	Deposit		75.00	387.00
19	19-12-2017	Withdrawal	32.00		355.00
20	20-12-2017	Deposit		85.00	440.00
21	21-12-2017	Withdrawal	38.00		402.00
22	22-12-2017	Deposit		95.00	497.00
23	23-12-2017	Withdrawal	42.00		455.00
24	24-12-2017	Deposit		105.00	560.00
25	25-12-2017	Withdrawal	48.00		512.00
26	26-12-2017	Deposit		115.00	627.00
27	27-12-2017	Withdrawal	52.00		575.00
28	28-12-2017	Deposit		125.00	700.00
29	29-12-2017	Withdrawal	58.00		642.00
30	30-12-2017	Deposit		135.00	777.00
31	31-12-2017	Withdrawal	62.00		715.00

Sl. No.	Date	Particulars	Cheque No.	Amount Withdrawn	Amount Deposited	Balance
1	01-12-17	OPEN BALANCE				100.00
2	02-12-17	BY DEPOSIT	10172		50.00	150.00
3	03-12-17	BY WITHDRAWAL	10172	20.00		130.00
4	04-12-17	BY DEPOSIT			30.00	160.00
5	05-12-17	BY WITHDRAWAL		10.00		150.00
6	06-12-17	BY DEPOSIT			40.00	190.00
7	07-12-17	BY WITHDRAWAL		15.00		175.00
8	08-12-17	BY DEPOSIT			25.00	200.00
9	09-12-17	BY WITHDRAWAL		8.00		192.00
10	10-12-17	BY DEPOSIT			35.00	227.00
11	11-12-17	BY WITHDRAWAL		12.00		215.00
12	12-12-17	BY DEPOSIT			45.00	260.00
13	13-12-17	BY WITHDRAWAL		18.00		242.00
14	14-12-17	BY DEPOSIT			55.00	297.00
15	15-12-17	BY WITHDRAWAL		22.00		275.00
16	16-12-17	BY DEPOSIT			65.00	340.00
17	17-12-17	BY WITHDRAWAL		28.00		312.00
18	18-12-17	BY DEPOSIT			75.00	387.00
19	19-12-17	BY WITHDRAWAL		32.00		355.00
20	20-12-17	BY DEPOSIT			85.00	440.00
21	21-12-17	BY WITHDRAWAL		38.00		402.00
22	22-12-17	BY DEPOSIT			95.00	497.00
23	23-12-17	BY WITHDRAWAL		42.00		455.00
24	24-12-17	BY DEPOSIT			105.00	560.00
25	25-12-17	BY WITHDRAWAL		48.00		512.00
26	26-12-17	BY DEPOSIT			115.00	627.00
27	27-12-17	BY WITHDRAWAL		52.00		575.00
28	28-12-17	BY DEPOSIT			125.00	700.00
29	29-12-17	BY WITHDRAWAL		58.00		642.00
30	30-12-17	BY DEPOSIT			135.00	777.00
31	31-12-17	BY WITHDRAWAL		62.00		715.00

UTKAL GRAMYA BANK

BRANCH: [Name] ADDRESS: [Address]

ACCOUNT NO: [Number]

COMPASSIONATE SAVINGS BANK FOR RURAL

ACCOUNT BALANCE: [Amount]

R_x



OFSDP



Expert Support

VSS
Village Support Staff
Village Support

Capacity Building

Convergence

Comprehensive Micro-plan for Forest & Community Development

Forestry

Livelihood Promotion

Resource Mobilization (Village Forest Development Fund)

VSS & SHG Capacity Development

VSS as Village Resource Centre

INSTITUTIONALIZING JFM

10 Districts 14 Forest / Wildlife divisions

www.ofsdp.org